

Centre of Excellence for a Sustainable Energy System

Information meeting about the Swedish Energy Agency's call for proposals concerning the centre of excellence

Information about the call for proposals

- Good and equivalent service with information and answers relating to the call for proposals
- Two open webinars in autumn
- Questions and answers are compiled in an open FAQ on [the website](#) in conjunction with the call for proposals

The meeting today

- Presentation of the call for proposals, c. 30 min.
- Question time
 - Ask questions via the chat system or by raising a hand

Swedish Energy Agency

We are leading society's transition
to a sustainable energy system

Energy policy targets for Sweden

100 per cent
renewable
electricity
production by 2040

Energy
consumption in
2030 that is 50 per
cent more efficient
than in 2005

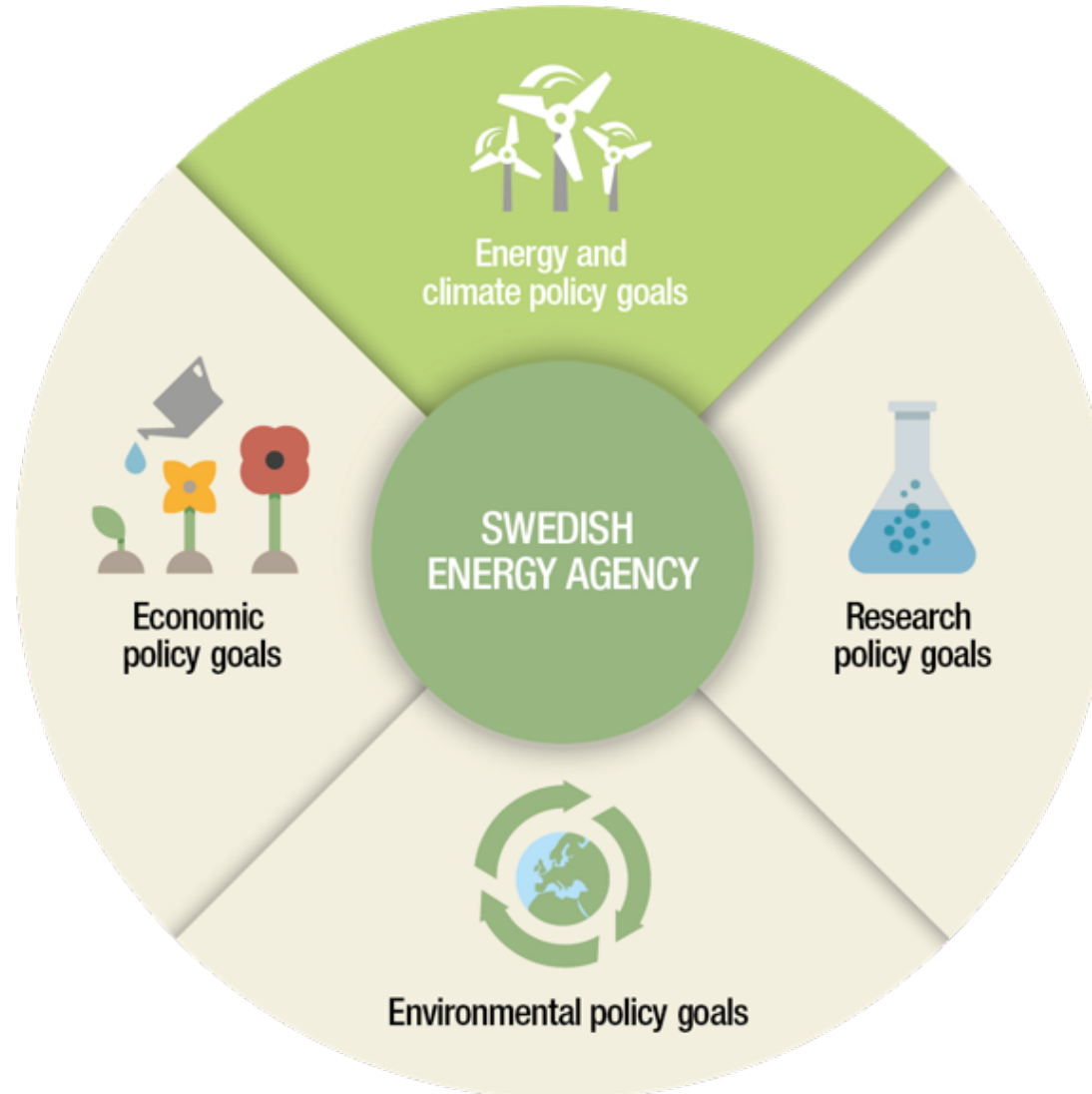
No net emissions
of greenhouse
gases
by 2045

Transport emission
in 2030 that are 70
per cent lower than
in 2010

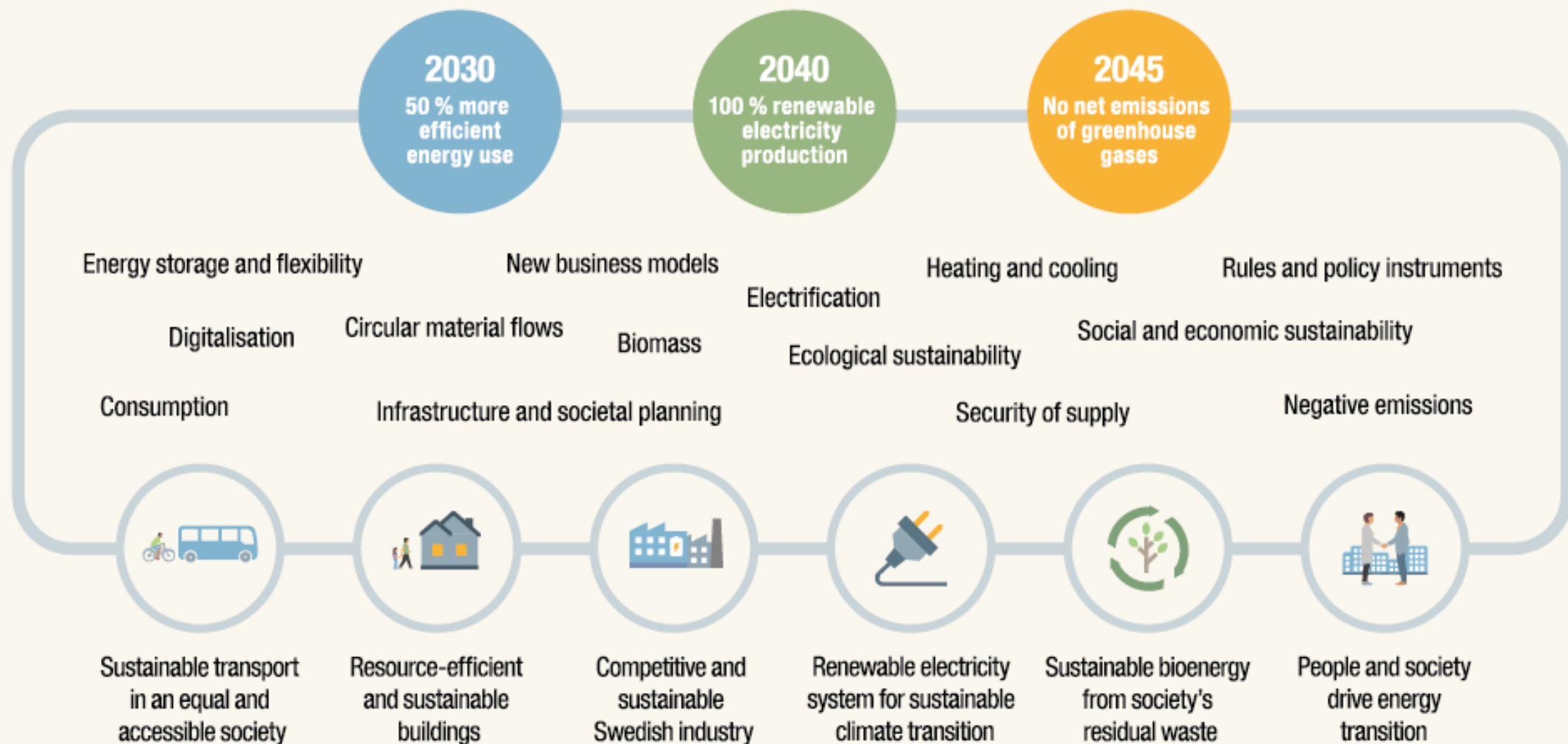


Cornerstones of Sweden's energy policy

Energy supply adds value to several policy areas



Sweden shall be the world's first fossil-free welfare state



“Sweden accounts for one thousandth of total global greenhouse gas emissions. But we can account for a significantly larger proportion of the climate solutions.”

What do we want to achieve through this funding?

Contribute to achieving the policy targets by encouraging:

- Long-term collaboration between universities, research institutes, the enterprise sector and the public sector
- The creation of internationally attractive research environments that conduct excellent, needs-based research
- Development of capabilities relating to issues of strategic importance to the sustainable energy system of the future
- Capability development that strengthens Sweden's competitiveness in the enterprise sector and society as a whole



What is a centre of excellence?

- Collaboration between partners in a research area in order to produce new knowledge and expertise for the benefit of the enterprise sector and society as a whole
- Internationally competitive research environments
- Examination of doctoral students and providing junior researchers with qualifications are central aspects
- Three-part funding
- Long-term commitment, up to 10 years



How does a centre of excellence work?

- The objectives, implementation and budget are described on an overarching level in the application
- The centre of excellence is managed by a **director**
- Its operations are governed by a **programme council** that is responsible for its budget and recommends new projects. These are decided on by a vice-chancellor.
- The relationship between the partners is governed by a **centre of excellence agreement** that, among other things, regulates access by the partners involved to the results of projects.

A long-term commitment in two stages

The centre of excellence is being given a planned lifespan of ten years in order to create long-standing cooperation between the partners

Support is being provided for two times five years, with the second five-year period being conditional on established operations and good results

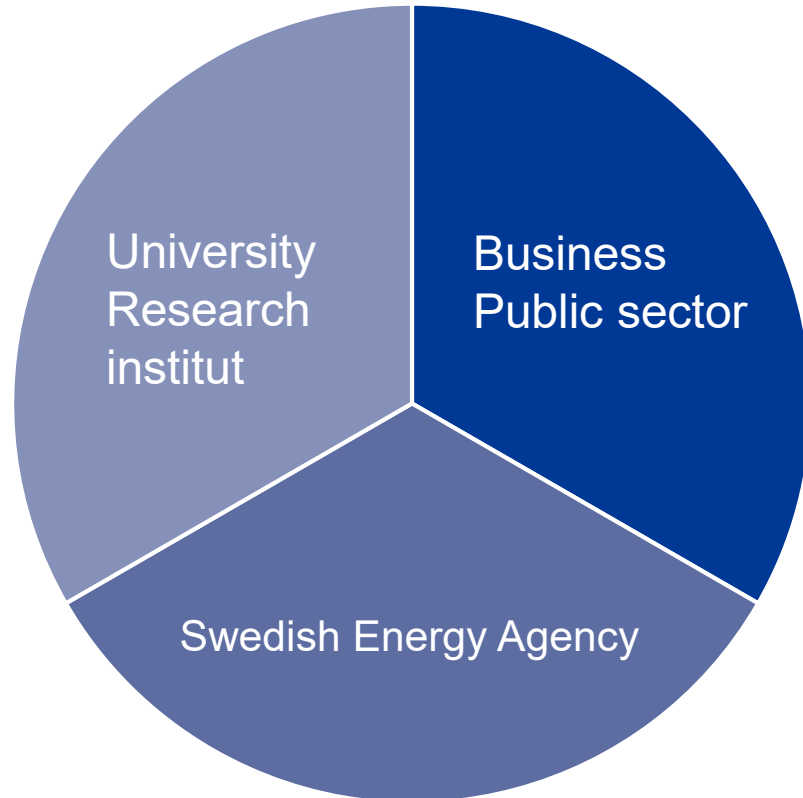
Annual reporting and evaluations takes place at the end of the five-year period

Application for a second five-year period

Who can apply?

- Groups of stakeholders with a shared vision that want to build a research environment based on excellent needs-based research for a sustainable energy system.
- The main applicant has to be a university that is applying together with a research institute, company and other societal stakeholders.
- The Swedish Energy Agency has no requirements in terms of the number of project partners, but collaboration is important.

What size of grant are we awarding?



The Swedish Energy Agency's portion can vary each year between SEK 5 million and 20 million.

What are we assessing?



The centres of excellence that are described in the applications are assessed on the basis of the following criteria:

1. Relevance and potential for the role played by the research area in the energy system of the future



What potential the research area has to develop the sustainable energy system of the future



What potential the research area has to encourage the enterprise sector to invest in the energy system's transformation



The centre of excellence's contribution to strengthening the competitiveness of the stakeholders involved



The centre of excellence's contribution to enabling the enterprise sector or public sector to confront structural changes

2. Potential for improving expertise within the area



What potential the centre of excellence has to strengthen or complement existing activities within the research area in question



What potential the centre of excellence has to create new networks and structures



The position of the centre of excellence in comparison to competing centres internationally



The number of planned doctoral students and postdocs in relation to the size of the centre of excellence



Is knowledge that is created at the centre of excellence appropriate for the purpose of strengthening first-cycle courses and study programmes at the higher education institution/institutions?

3. Feasibility



Credibility of the approach, organisation, involvement of and collaboration between project partners in order to achieve the vision and objectives of the centre of excellence



A well-thought out plan for the development of the centre of excellence over the next five years
Plan for communication and dissemination of results



Are the centre's objectives measurable, tangible, well defined and reasonably ambitious?
Are the budget and funding reasonable in relation to the intended contributions and objectives?



The opportunities to move between academic employment and employment in the enterprise sector



The composition of the centre of excellence on the basis of a gender and gender equality perspective, as well as a plan for gender integration, including engagement and influence

4. Group of stakeholders



What expertise, capability and ambition the partners have in order to strengthen the research area



The current scientific excellence of the partners involved in an international perspective



How comprehensively the involvement by the enterprise or public sector covers the entire value chain or systemic solutions that are to be studied



What expertise, capability and commitment the director of the centre and its senior management have in terms of leading and organising the centre



A distribution of small, medium and large companies that is representative of the area

How is our assessment conducted?

Applications are reviewed to ensure they are complete and that the formal requirements are met before they are sent to an external assessment group.

The assessment group reviews and assesses the applications on the basis of the assessment criteria. The applications that, taking all factors into account, are deemed the best are recommended for the next stage.

Interviews with representatives of each application. The assessment group submits a recommendation to the Swedish Energy Agency.

The Swedish Energy Agency makes the final selection of which centres of excellence receive funding.

Application, language



Applications in English are preferred as an external assessment group consisting of Swedish and international experts will be assessing the applications.



Applications in another language are sent for translation by the Swedish Energy Agency without the opportunity for subsequent revision by the applicant.

Application, practical suggestions



Applications are submitted via [E-kanalen](#). The specific application form that has been produced for the call for proposals, together with other completed application template are submitted as appendices to the application.



The same information that is submitted in the application form does not need to be filled in again in the form on E-kanalen. However, the cost and funding table must be filled in.



No supplementary submissions can be made after the call for proposals have been closed unless the Swedish Energy Agency requests these.

Schedule and budget



The call for proposals opens on 1 October 2020 and closes on 31 May 2021



The Swedish Energy Agency is allocating SEK 130 million per year through this call for proposals



A decision concerning funding is expected at the end of 2021 and new centres of excellence can begin operating in 2022



Recurring calls for proposals every five years

Important to consider!

- Read the call for proposals and application form carefully and ensure that you are answering and including everything that is required
- Put the consortium together in good time
- Conduct a strategic analysis for the intended centre
- Begin filling in the form in E-kanalen in good time
- Ask us if you have any questions

The image shows the exterior of a modern building with a light-colored, textured facade. A prominent feature is a large, vertical window with a red frame. To the right, the name 'Energimyndigheten' is displayed in large, blue, 3D block letters. Above the text is a circular logo consisting of three concentric arcs in black, white, and red. A small, modern light fixture is mounted on the wall below the logo. The sky is overcast and grey.

 Energimyndigheten