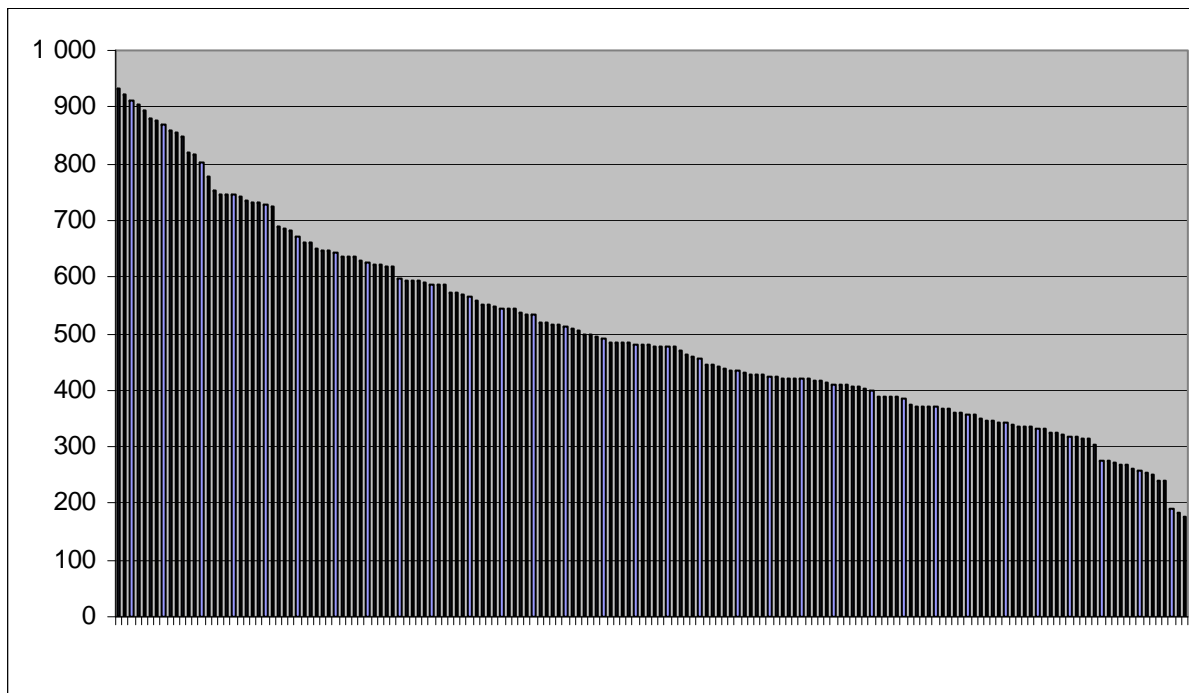


# Resultat från omfattande analys av användningen av hushållsel i 400 bostäder

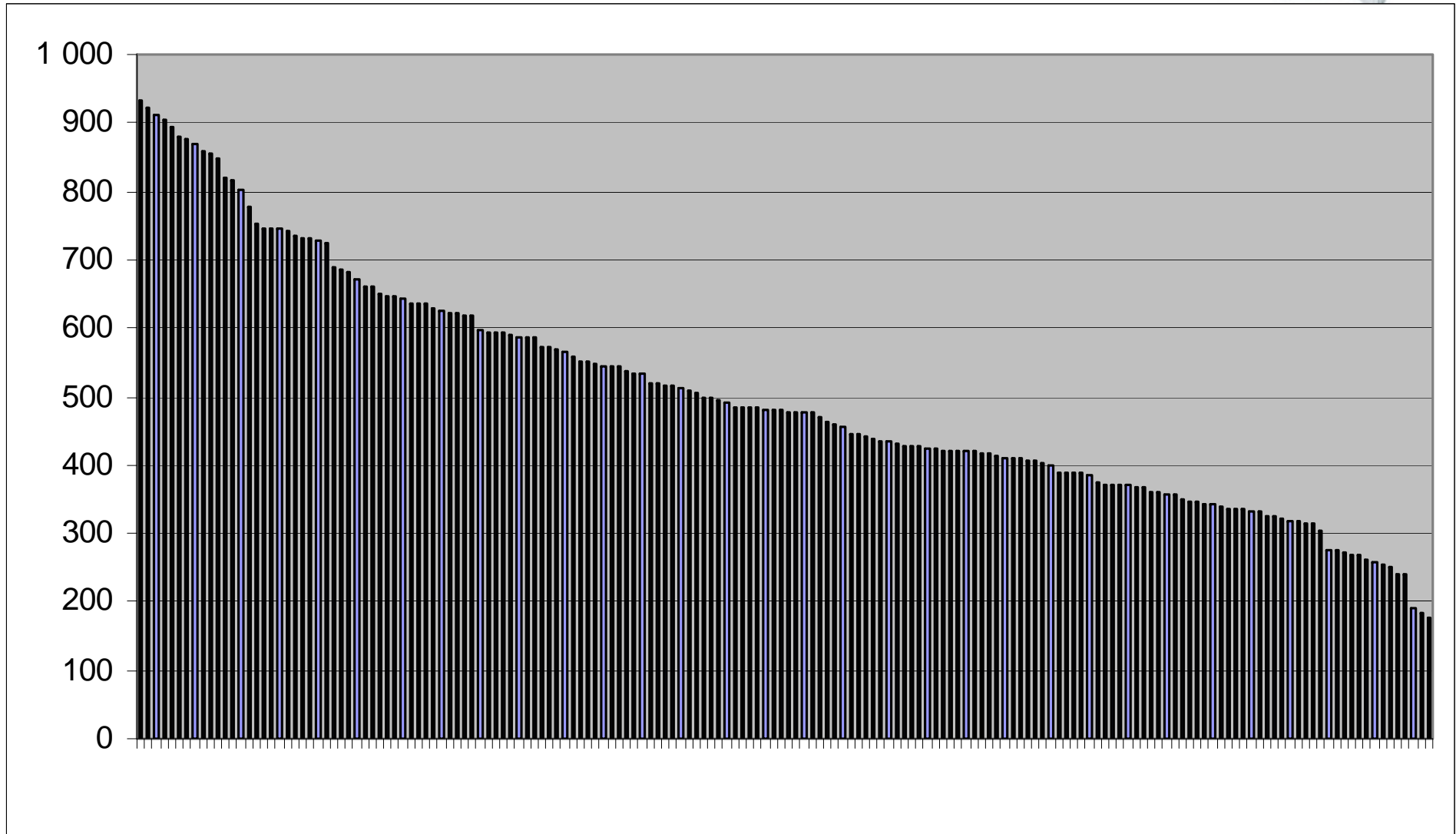
Egil.ofverholm@energimyndigheten.se



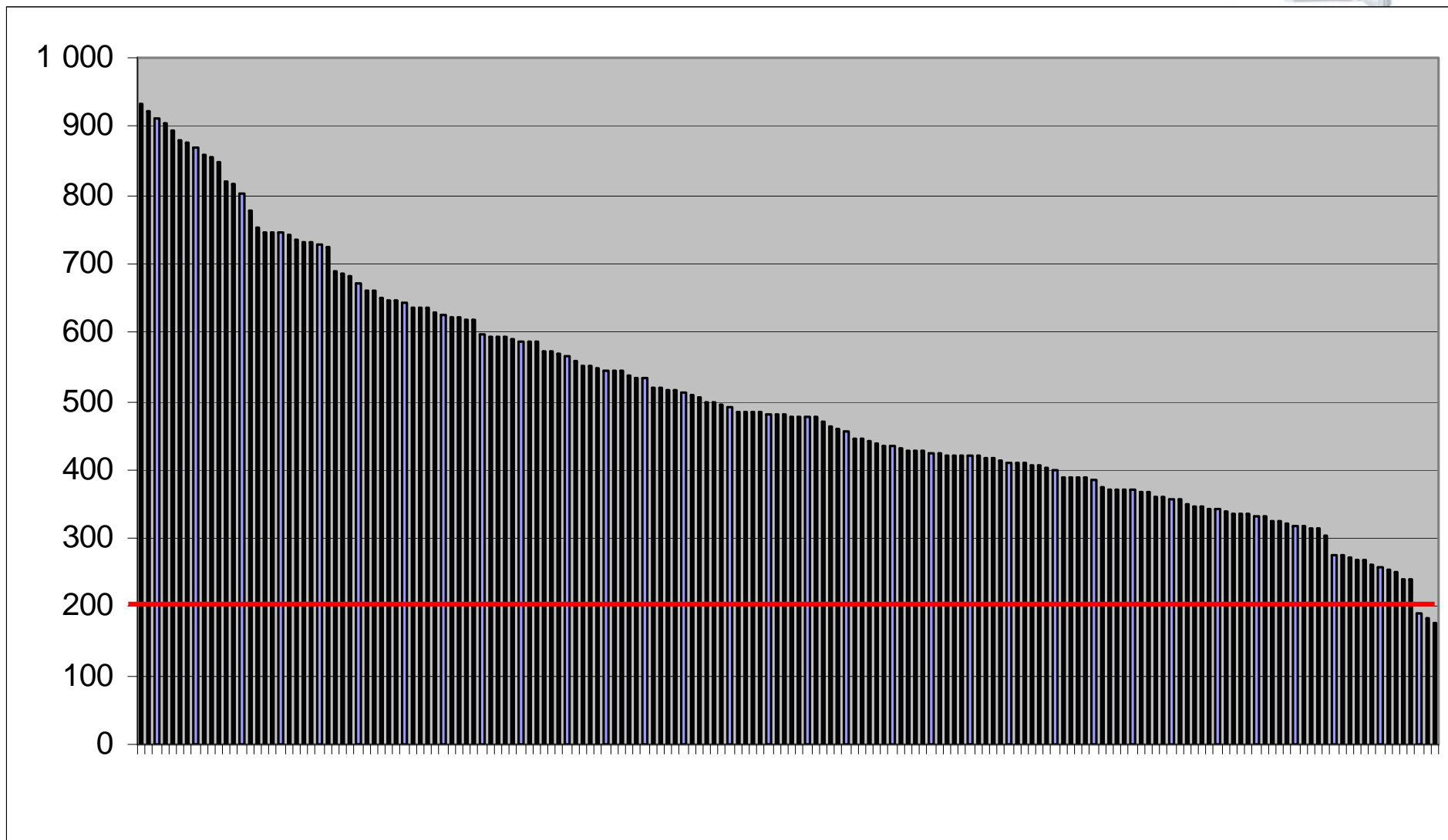
Hearing

090930

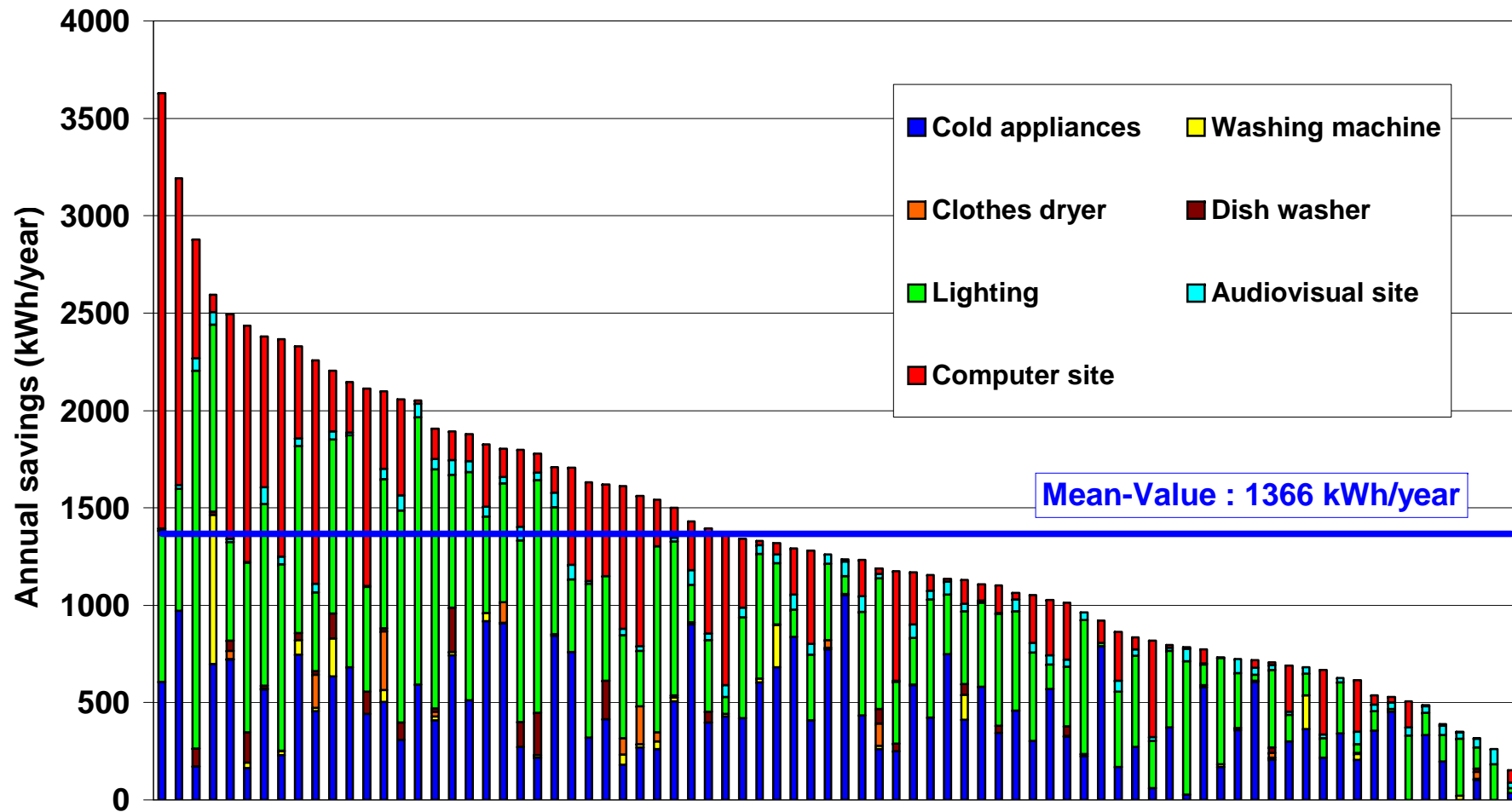
# Kylfrys, kWh/ år, hushåll



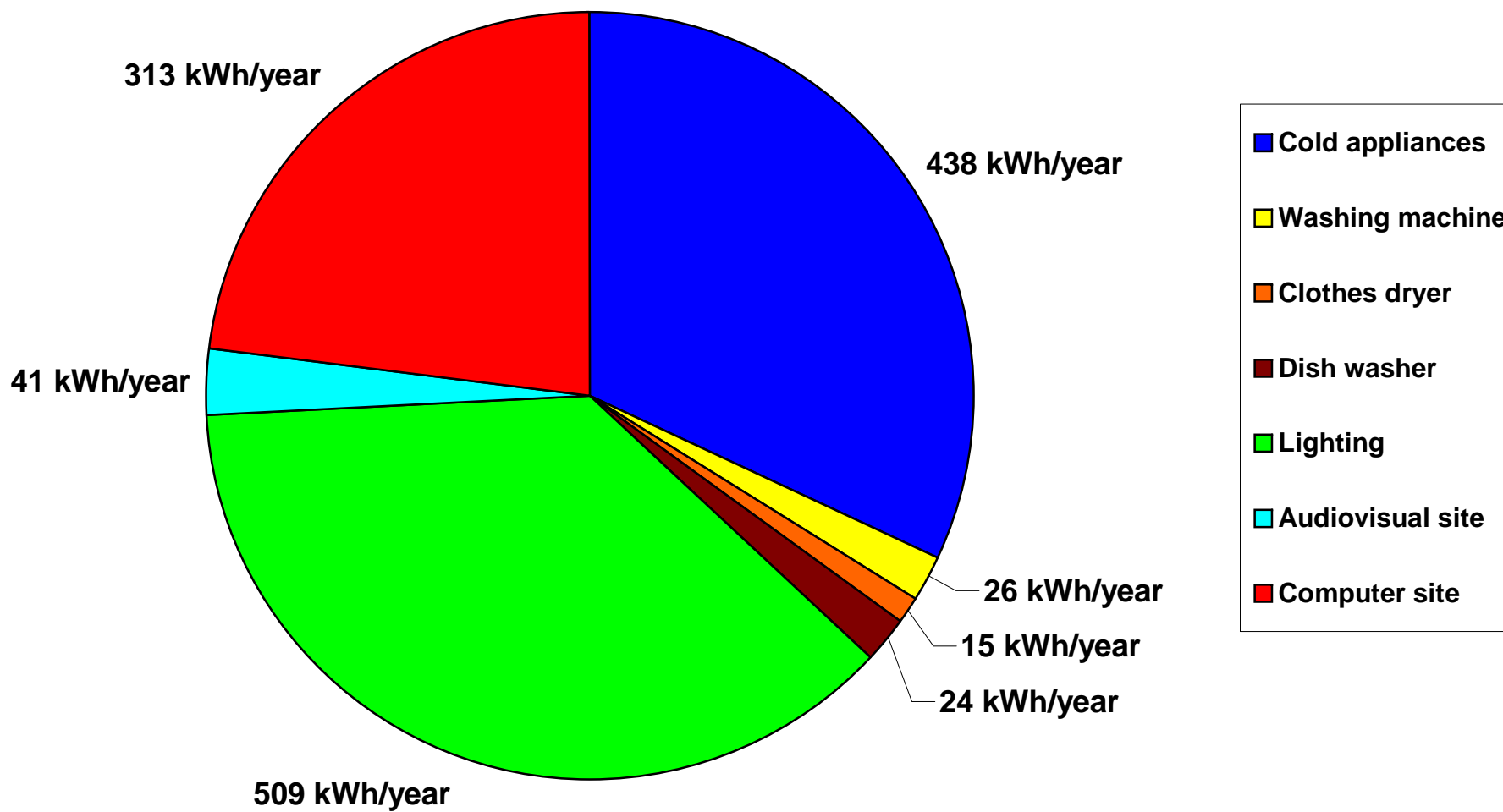
# Kylfrys, kWh/ år, hushåll och marknadens bästa



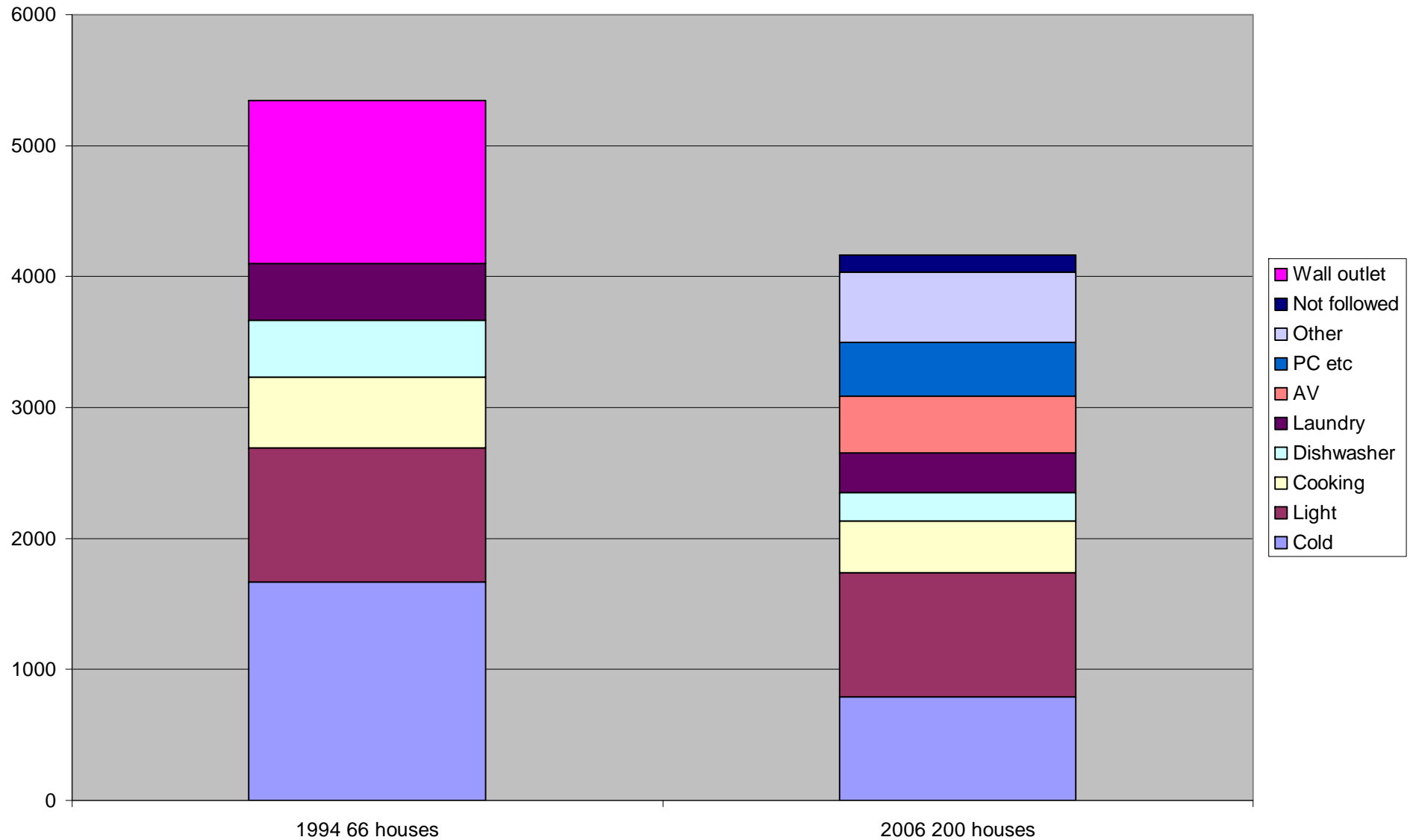
### Total annual savings per household Apartment, family, 26-64 years old



### Repartition of the annual savings Apartment, family, 26-64 years old



# The efficiency increase



# The domestic electricity per household/m<sup>2</sup>/person

kWh/year	Family 26-64	Family 26-64	Couple 26-64	Couple 26-64	Single 26-64	Couple 64-	Couple 64-	Single 64-
per;	House	Apartm	House	Apartm	Apartm	House	Apartm	Apartm
household	4143	3710	3358	2404	1742	2918	2139	1682
m <sup>2</sup>	32	76	26	76	27	23	29	22
person	1109	1187	1619	1202	1742	1459	1070	1682

# The domestic electricity per household/**m<sup>2</sup>**/person

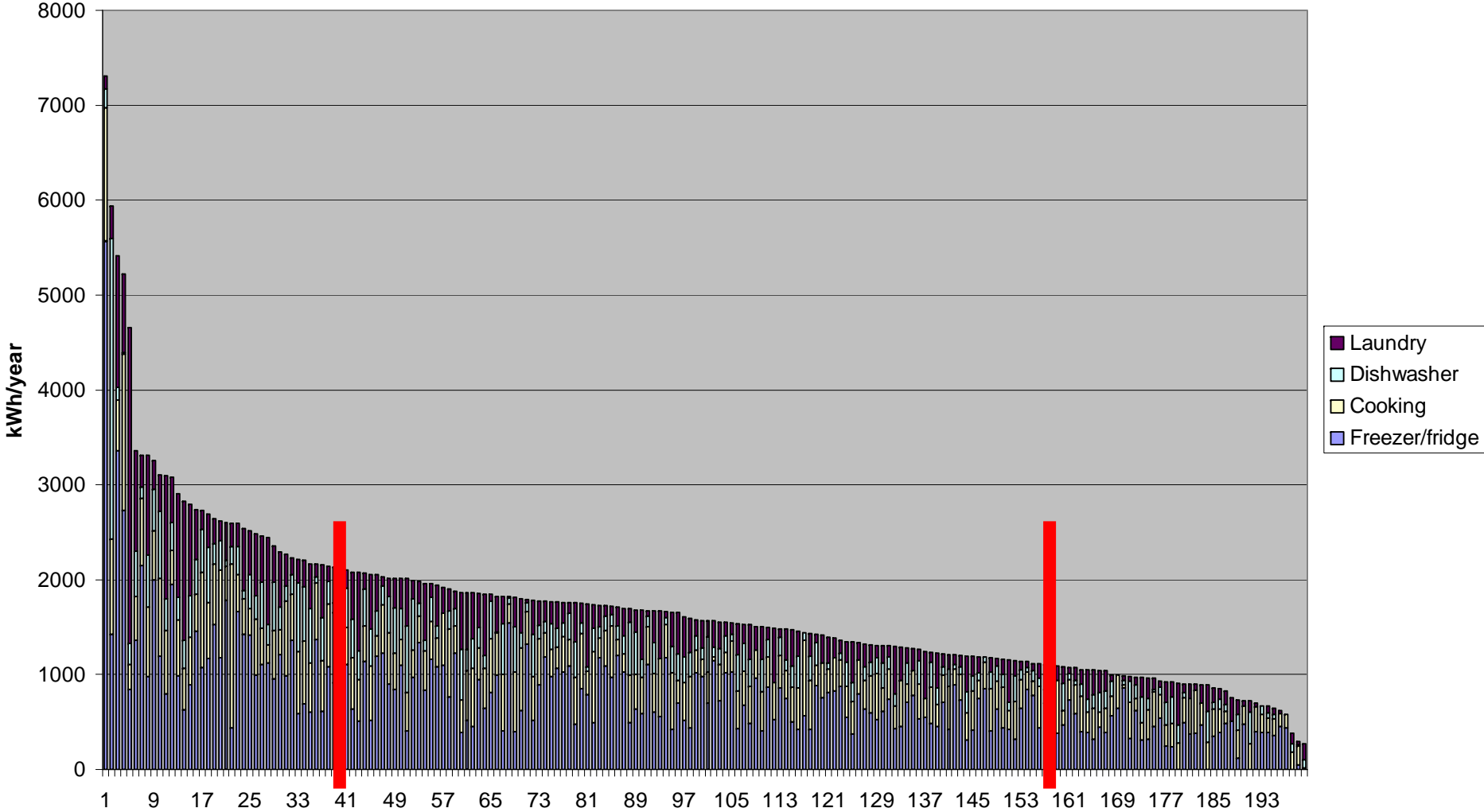
kWh/year	Family 26-64	Family 26-64	Couple 26-64	Couple 26-64	Single 26-64	Couple 64-	Couple 64-	Single 64-
per;	House	Apartm	House	Apartm	Apartm	House	Apartm	Apartm
household	4143	3710	3358	2404	1742	2918	2139	1682
<b>m<sup>2</sup></b>	32	76	26	76	27	23	29	22
person	1109	1187	1619	1202	1742	1459	1070	1682

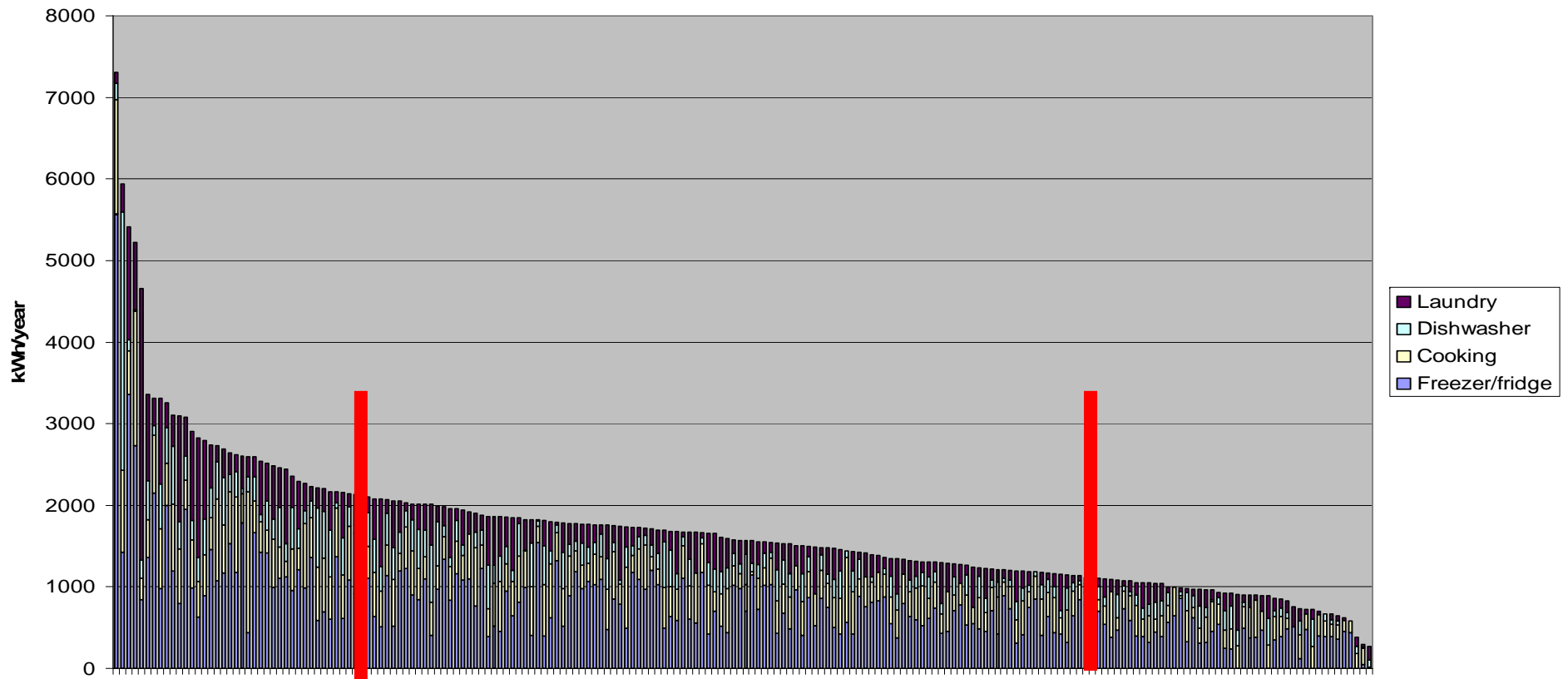


# The domestic electricity per household/m<sup>2</sup>/person

kWh/year	Family 26-64	Family 26-64	Couple 26-64	Couple 26-64	Single 26-64	Couple 64-	Couple 64-	Single 64-
per;	House	Apartm	House	Apartm	Apartm	House	Apartm	Apartm
household	4143	3710	3358	2404	1742	2918	2139	1682
m <sup>2</sup>	32	76	26	76	27	23	29	22
person	1109	1187	1619	1202	1742	1459	1070	1682

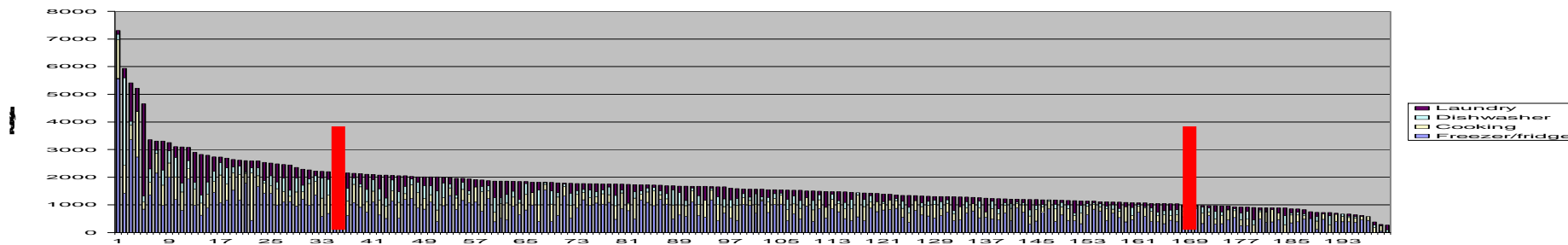
### Whitegoods 200 one family houses



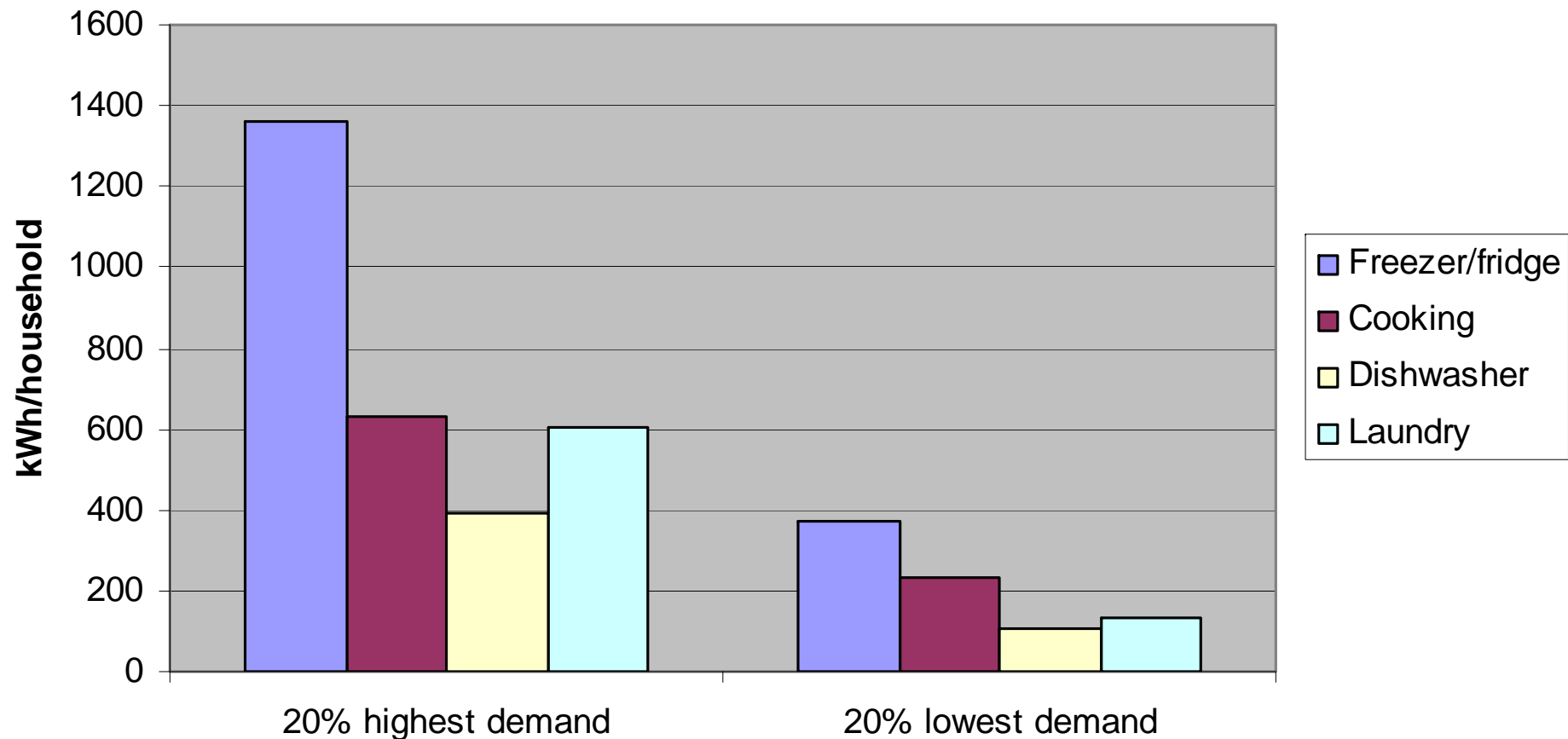


1	20% highest demand		20% lowest demand
	1358	Freezer/fridge	373
	632	Cooking	233
	395	Dishwasher	104
	607	Laundry	132
	2992	Sum	842
	0	1 person	3
	8	2 person	17
	4	3 person	6
	13	4 person	8

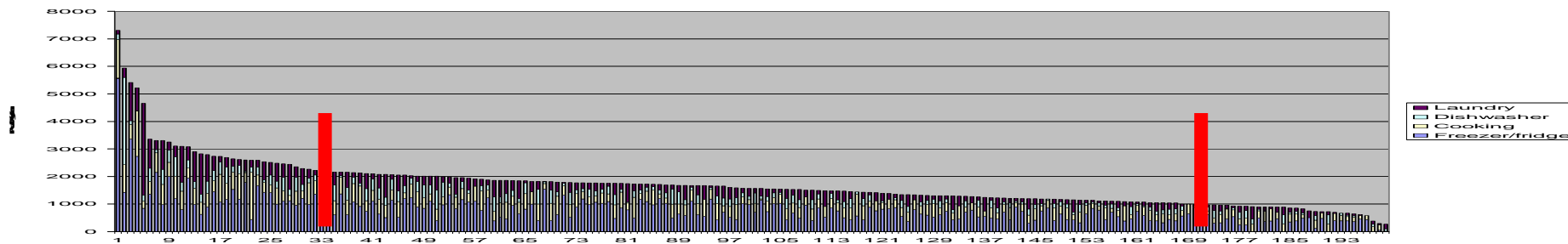
Whitegoods 200 one family houses



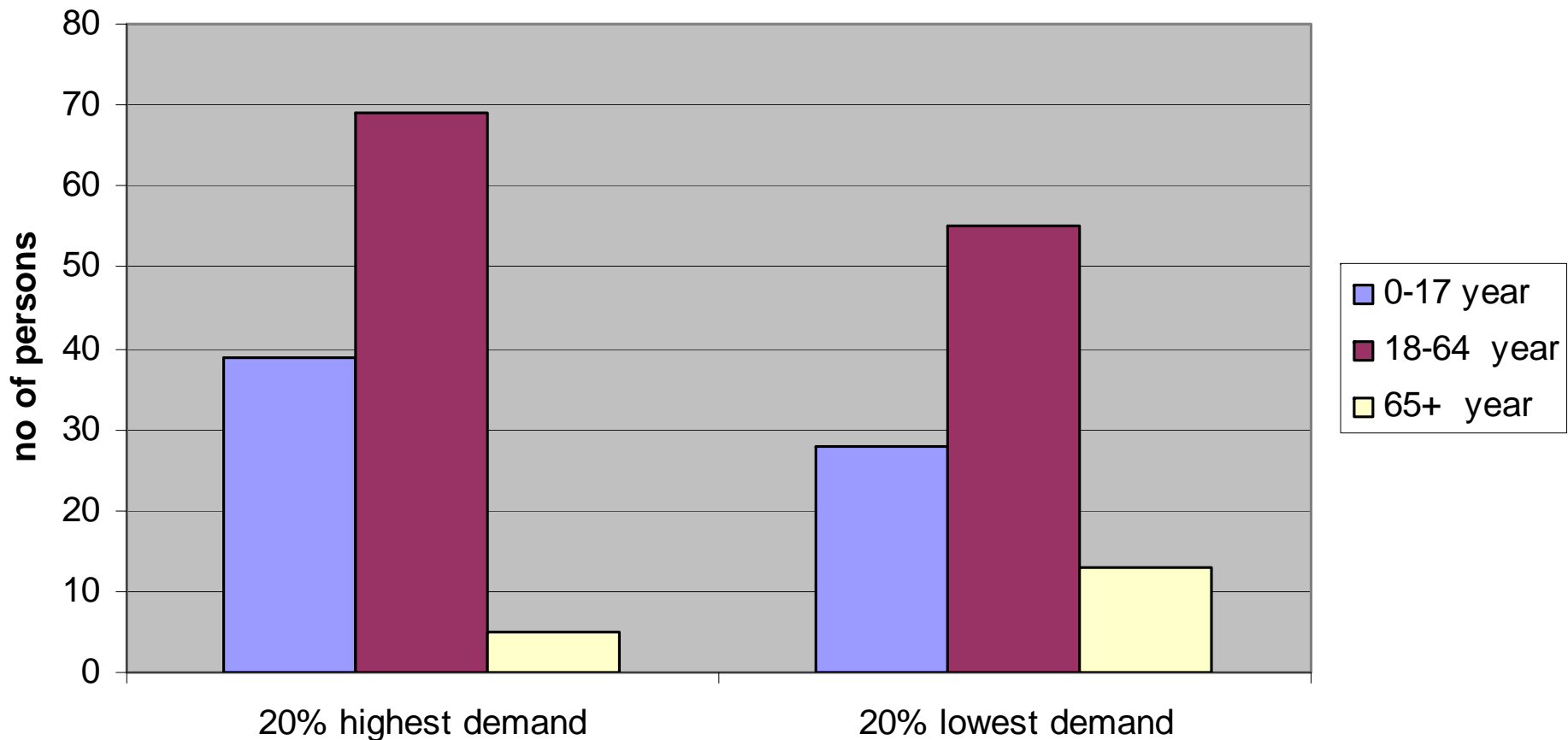
White goods and energy



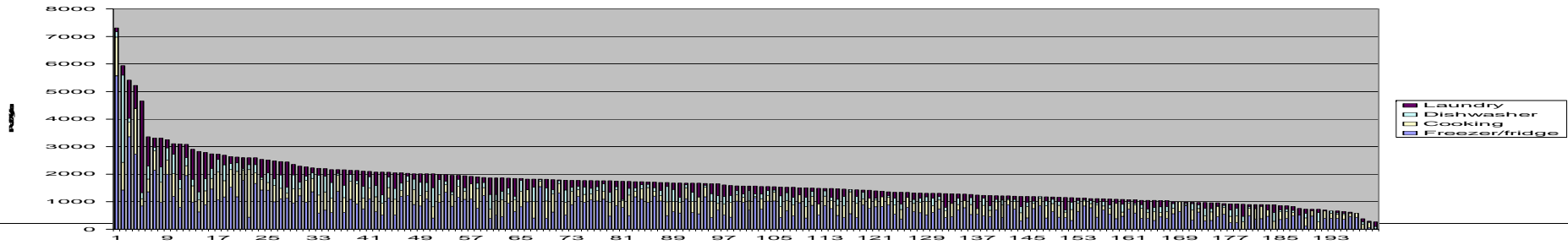
Whitegoods 200 one family houses



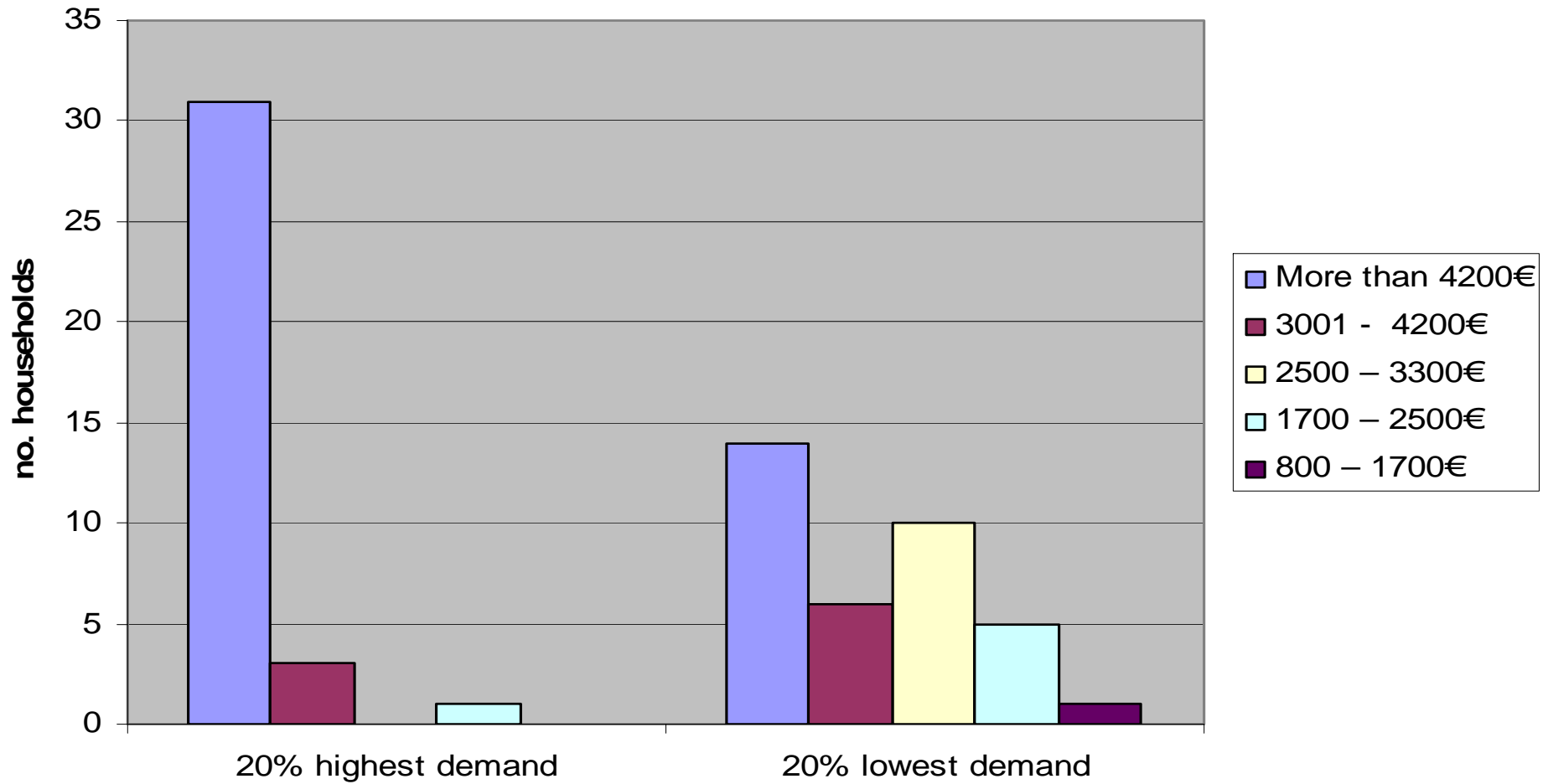
White goods and age



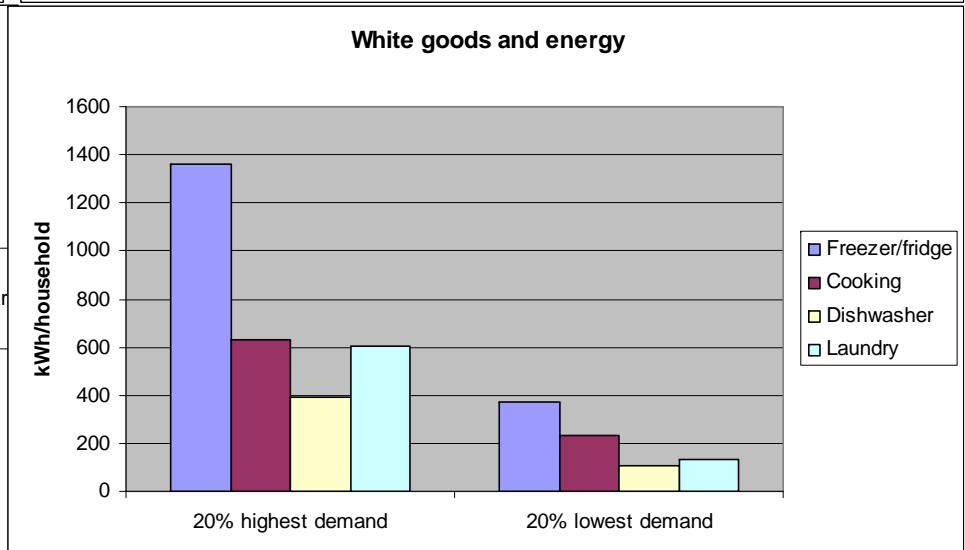
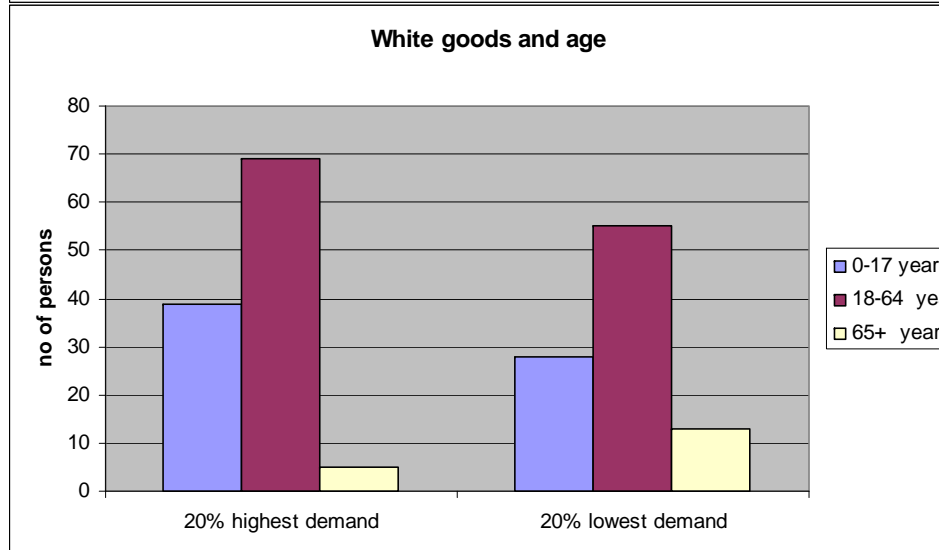
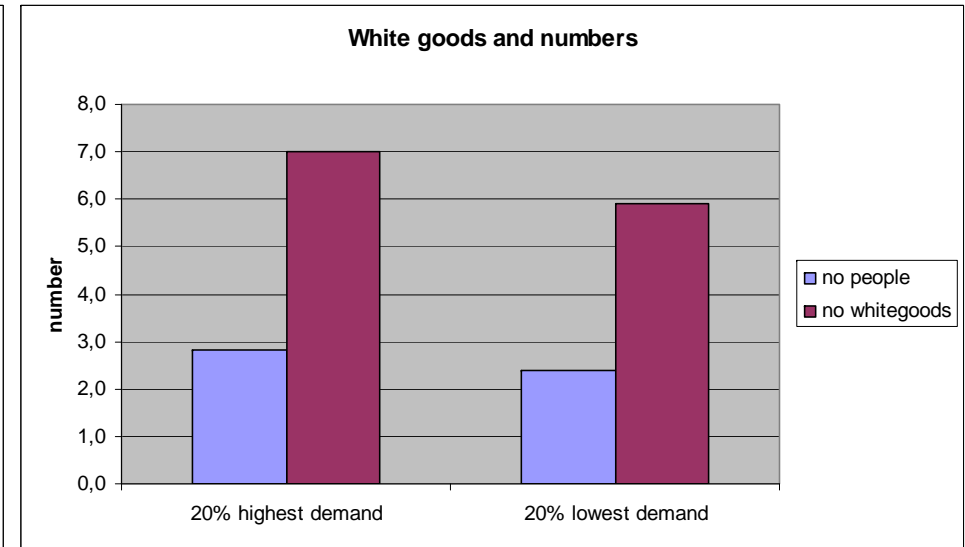
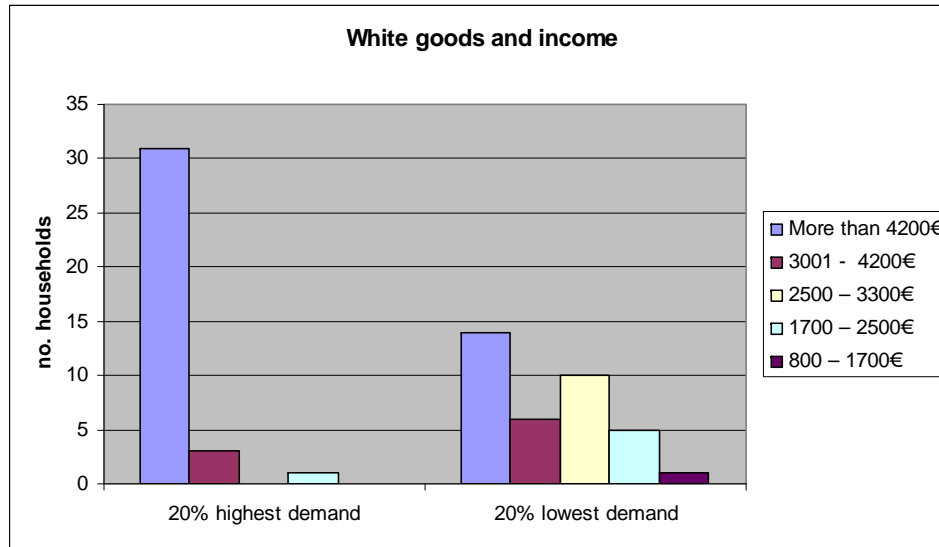
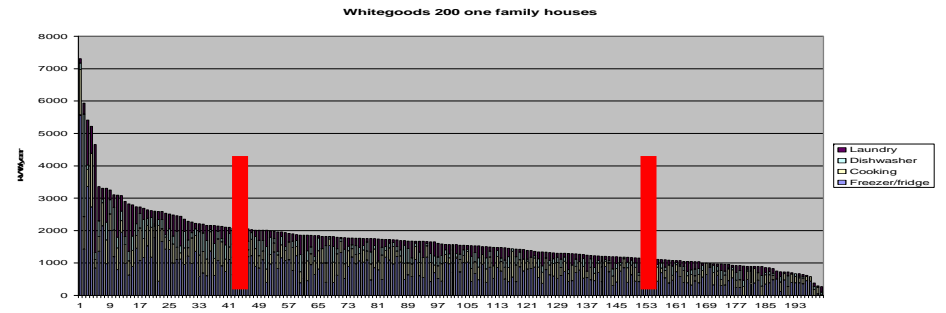
Whitegoods 200 one family houses



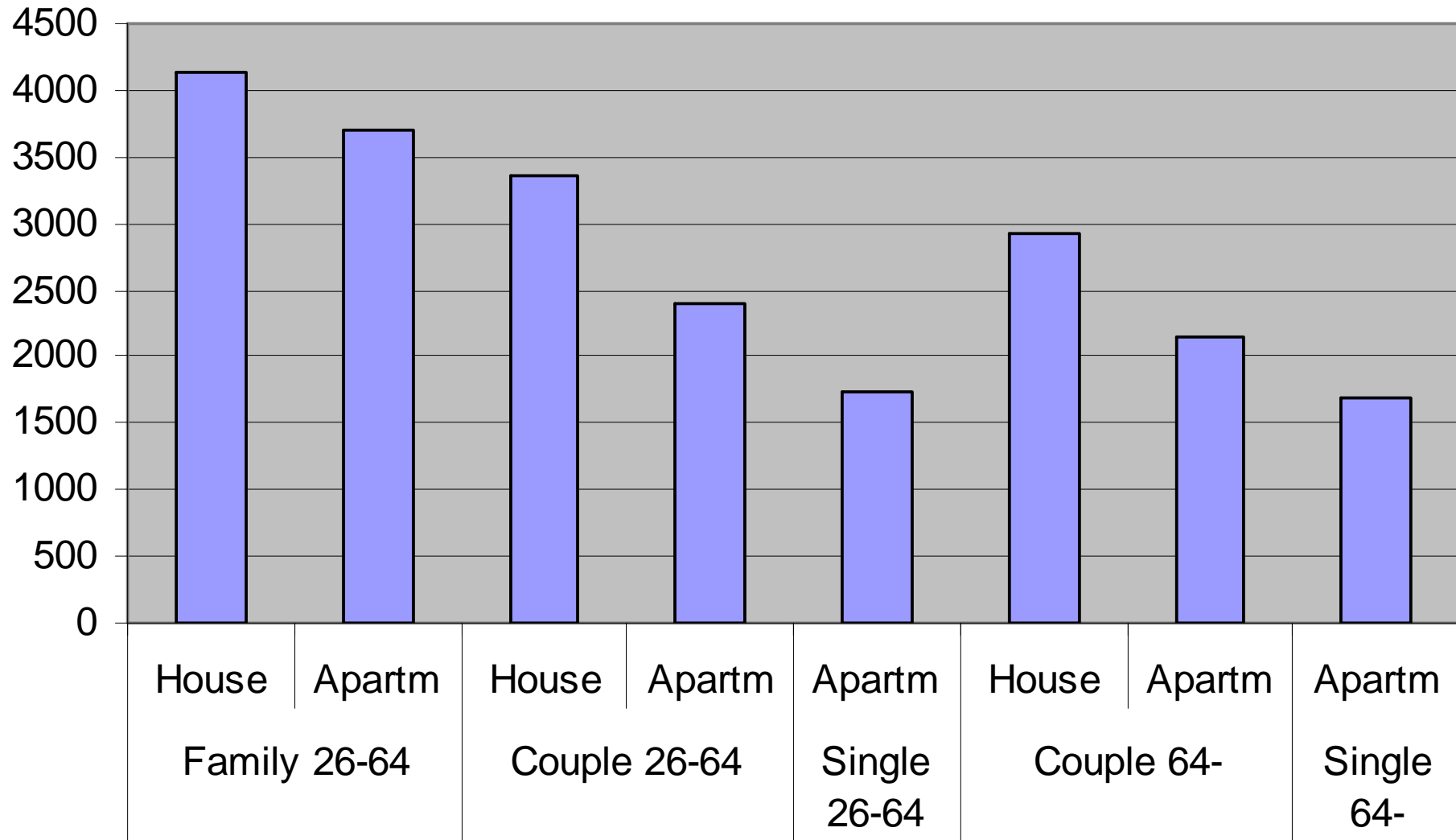
White goods and income



# Summary



# Household electricity, kWh, year

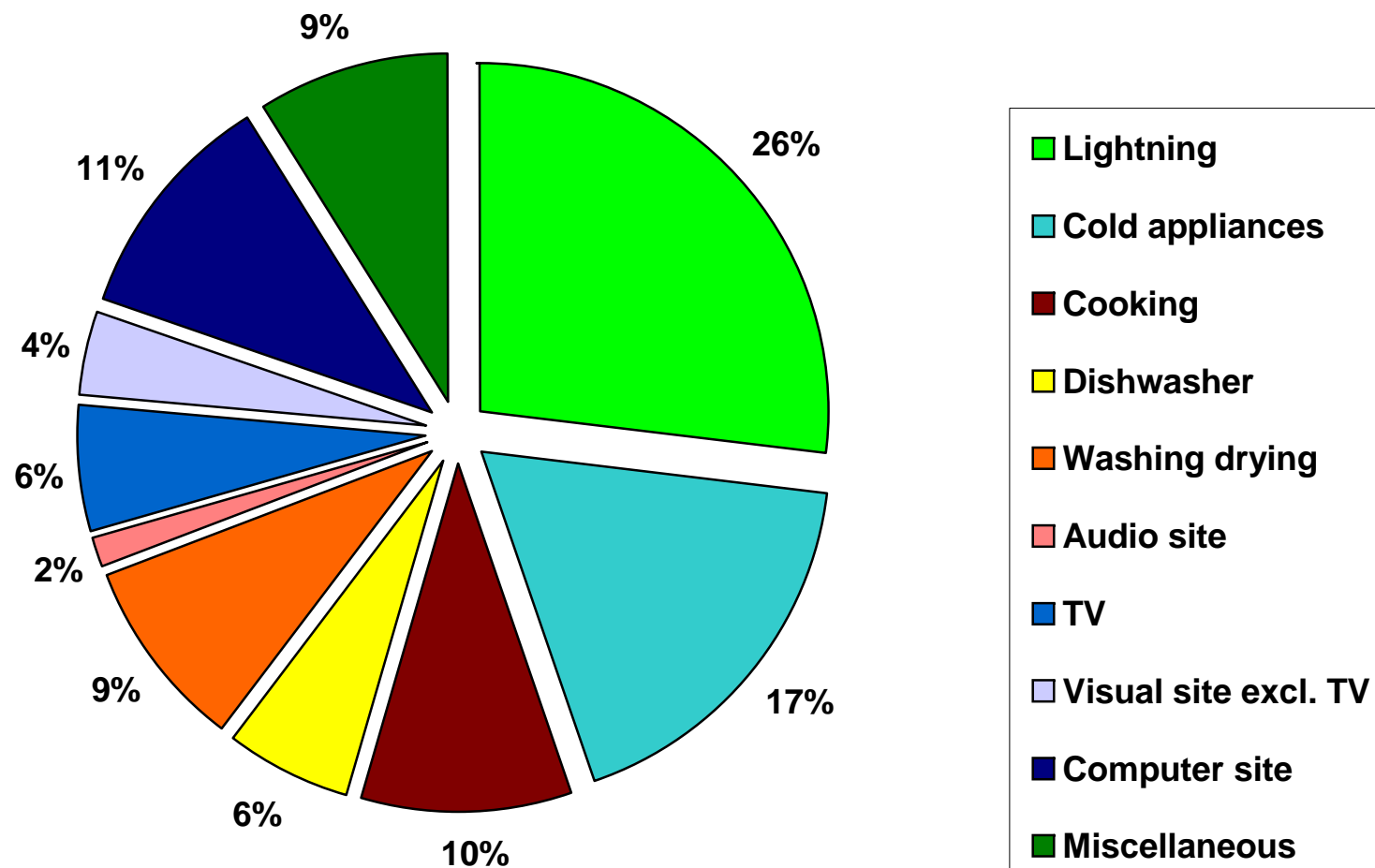




## Relative contribution from the different loads - Specific consumption

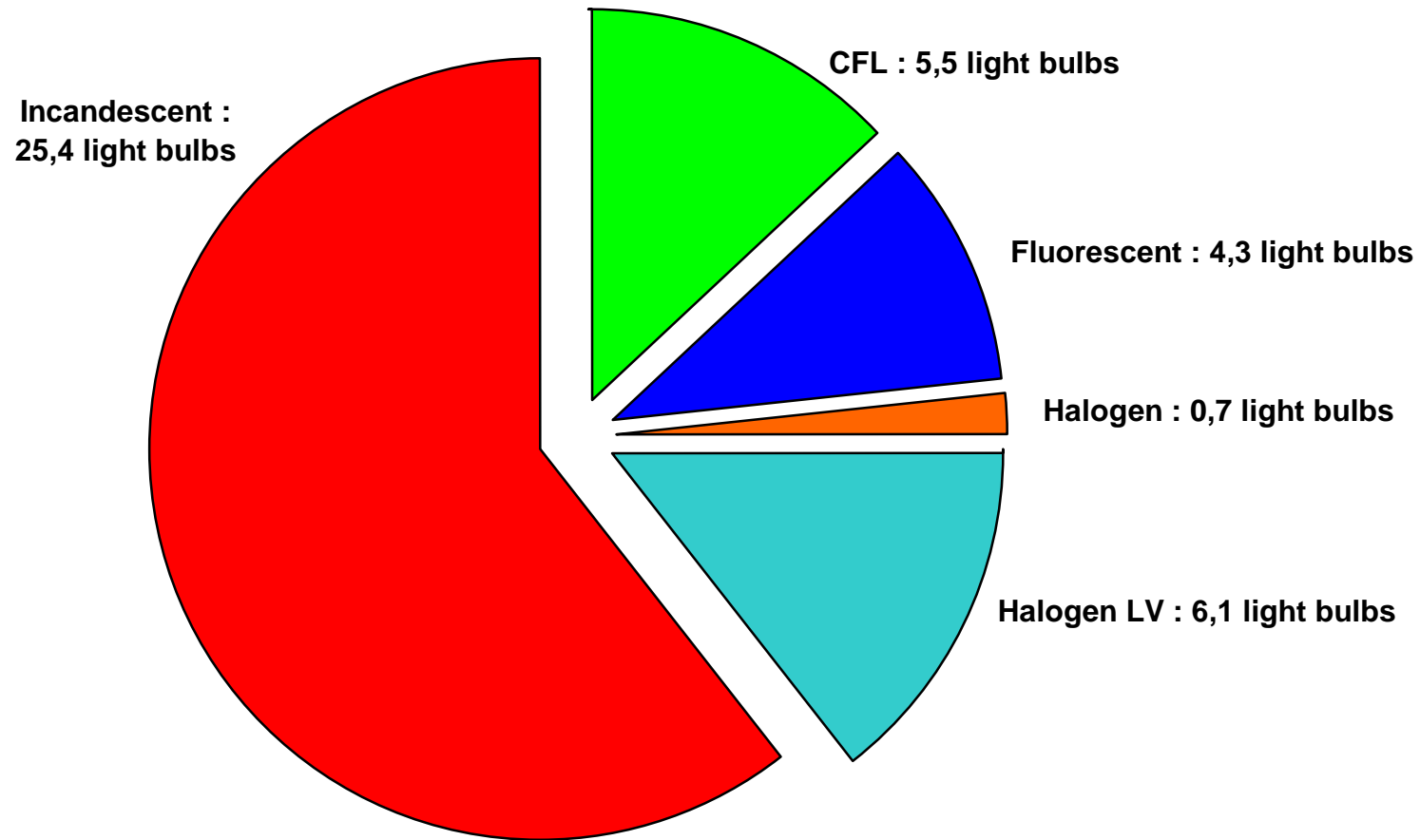
House, family, 26-64 years old, with direct electric heating

*All days*



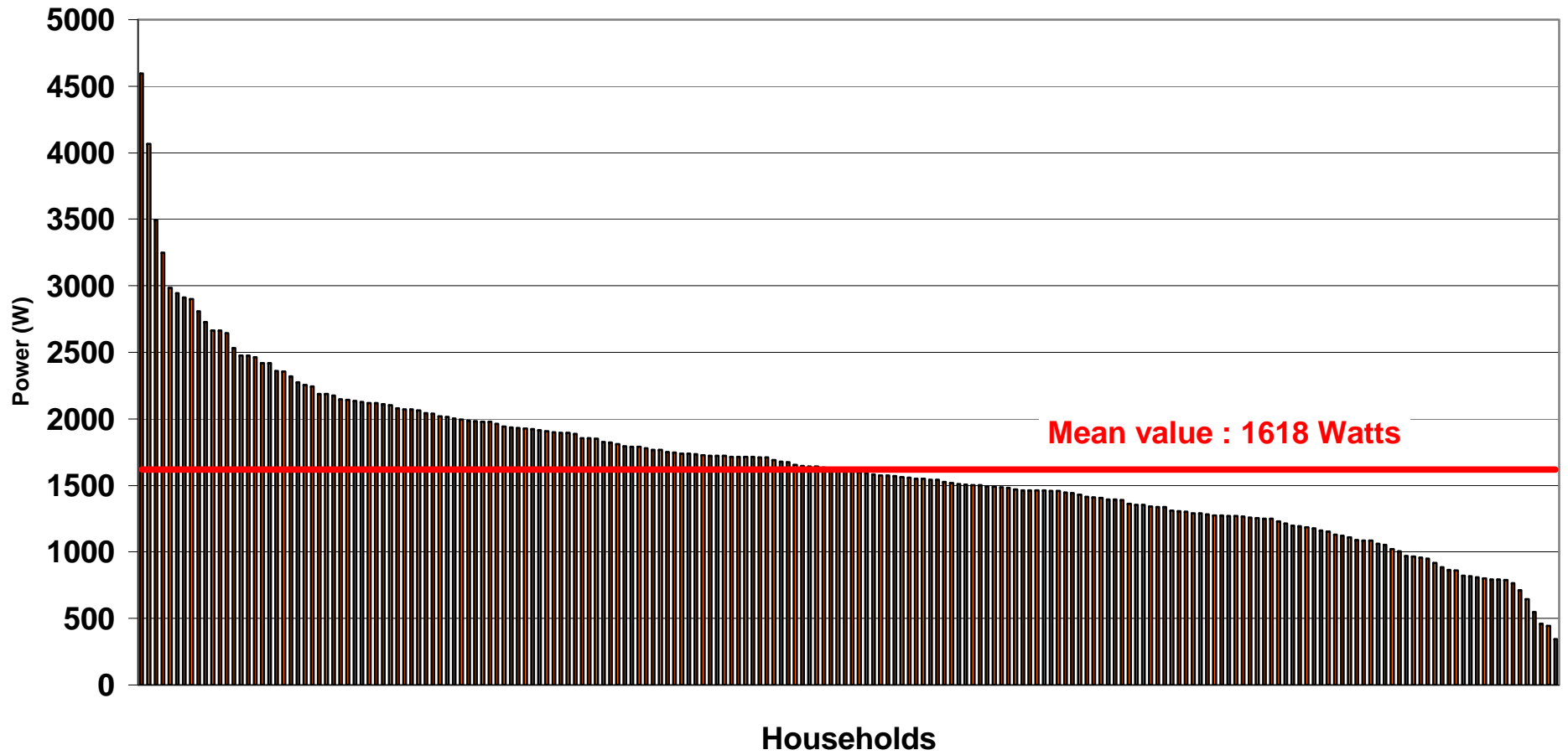
**Average number of light bulbs  
per household : 42,0**

**Lighting**  
**Average number of light sources per type of light bulbs**  
*All households*

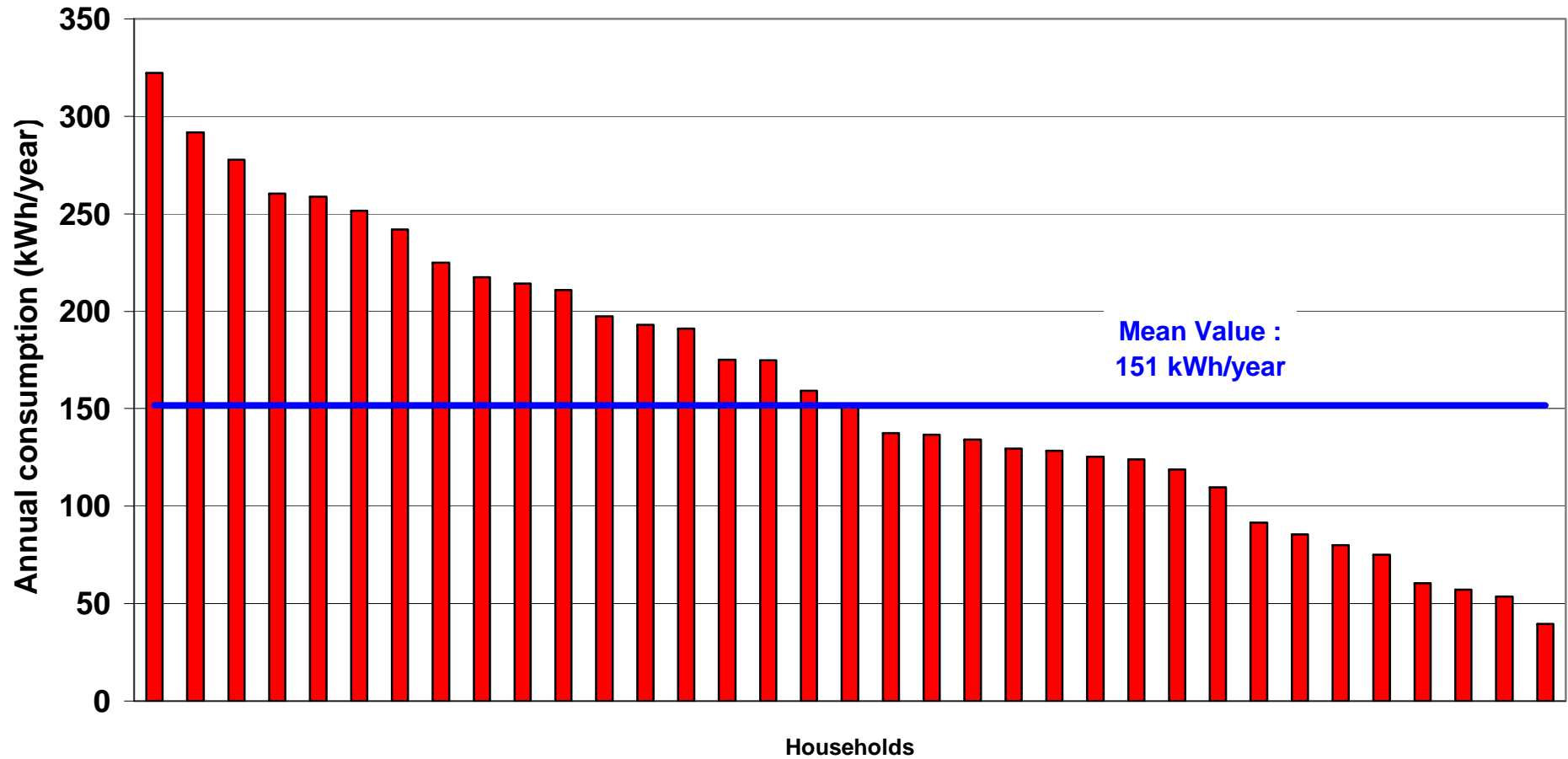


# Lighting

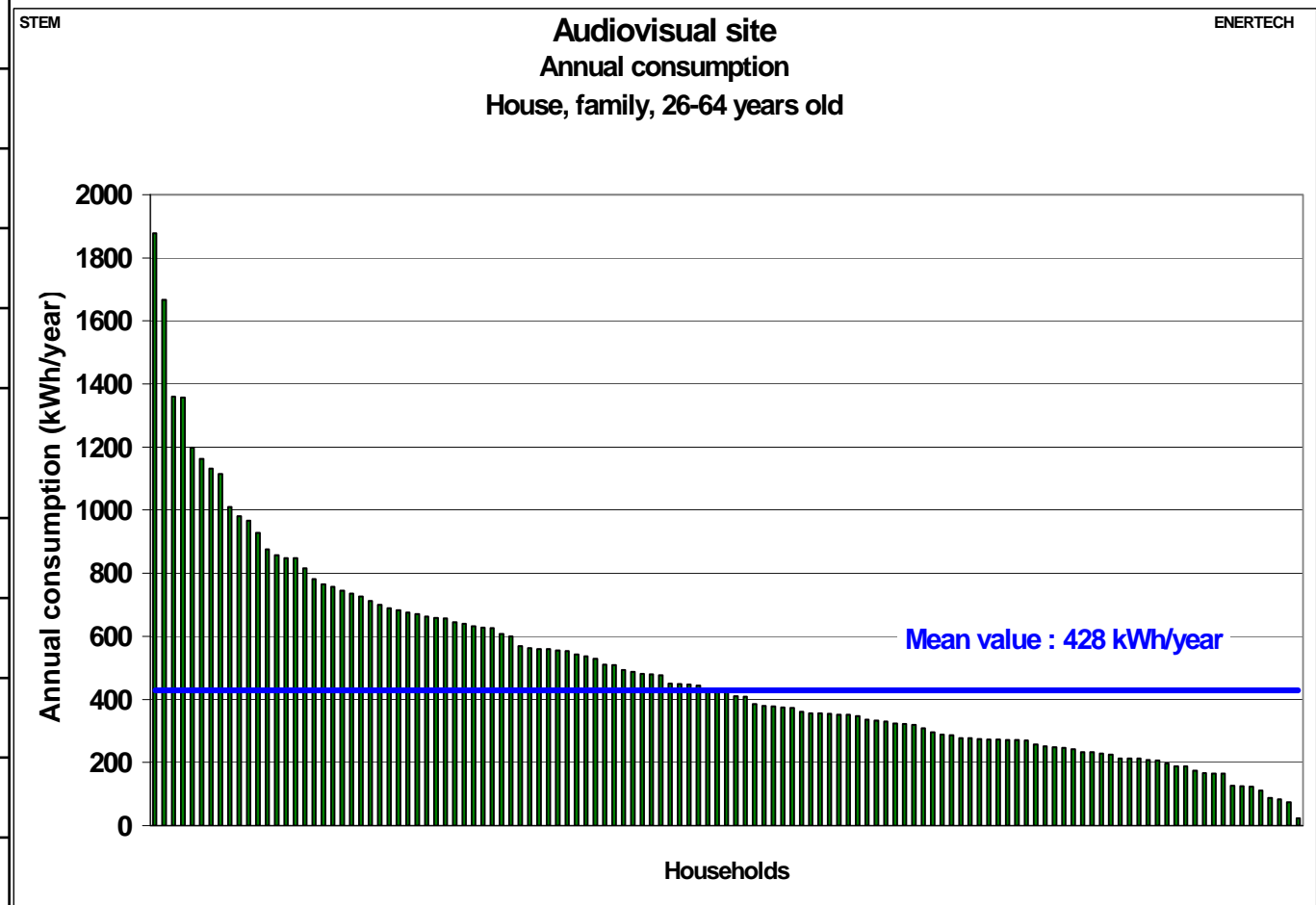
Average value of the installed lighting wattage  
Houses



### Washing machine Annual consumption House, couple without children, 26-64 years old



Device	Houses	Apartments
TV	2,11	1,52
Hi-fi	1,12	0,88
DVD player	0,98	0,73
VCR	0,83	0,72
Satellite	0,72	0,29
Home cinema	0,12	0,08
Xbox	0,05	0,02
Surround system	0,03	0,00
PS2	0,03	0,05
Projector	0,02	0,02
Cable TV Box	0,01	0,01
Playstation	0,01	0,02
Tuner	0,01	0,01

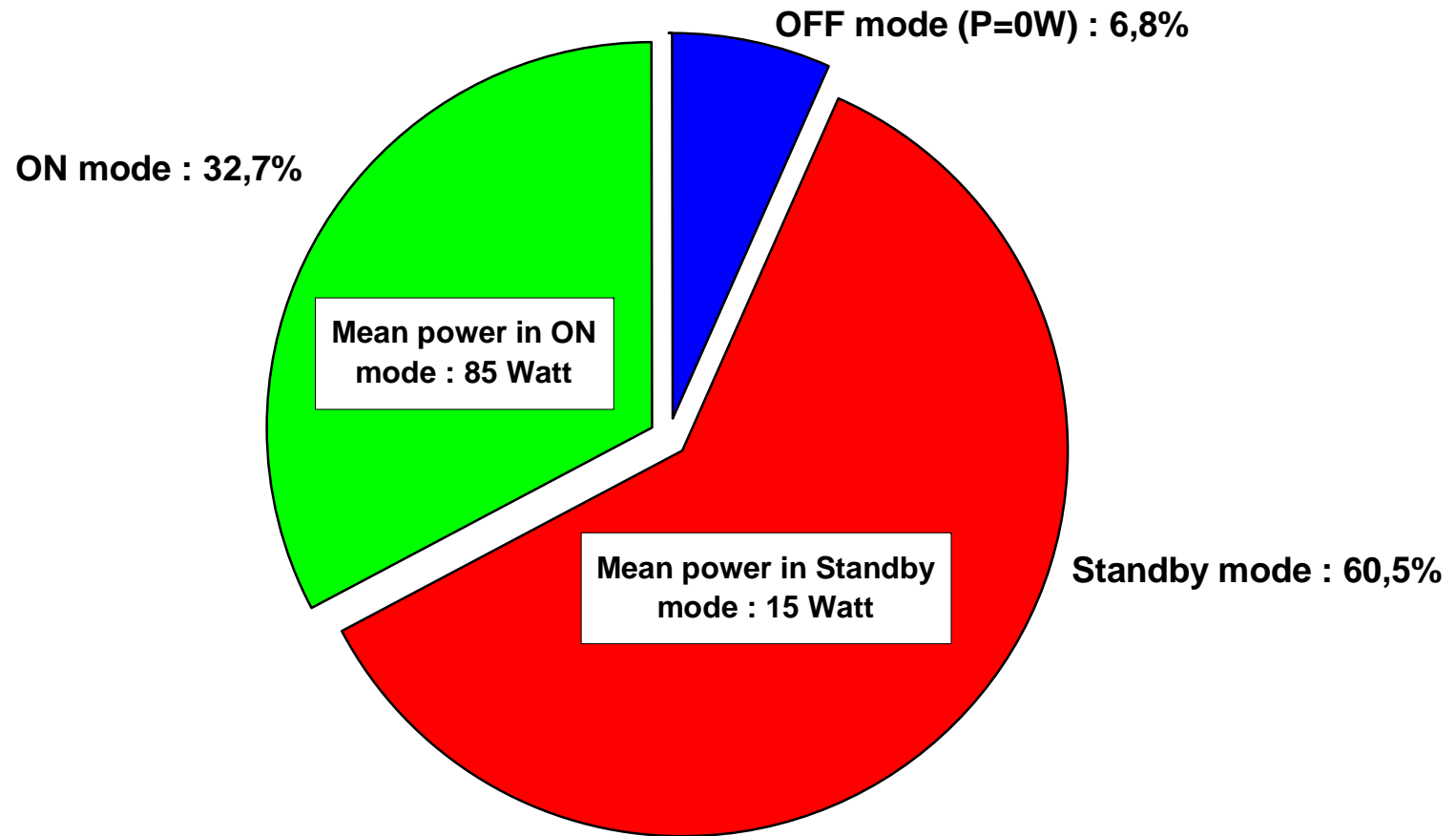


# Standby

STEM

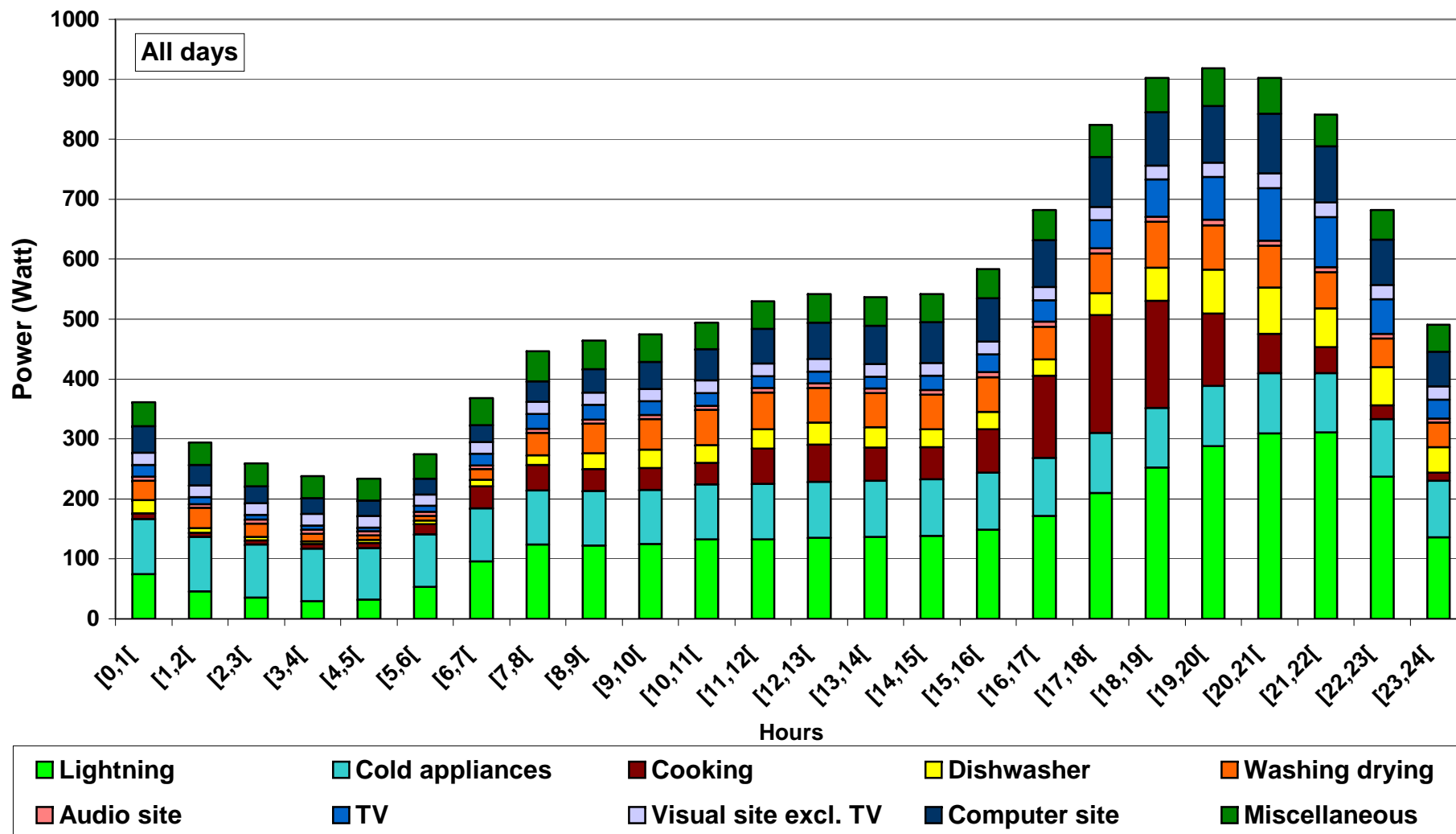
ENERTECH

**Audiovisual site**  
Time repartition between the different states

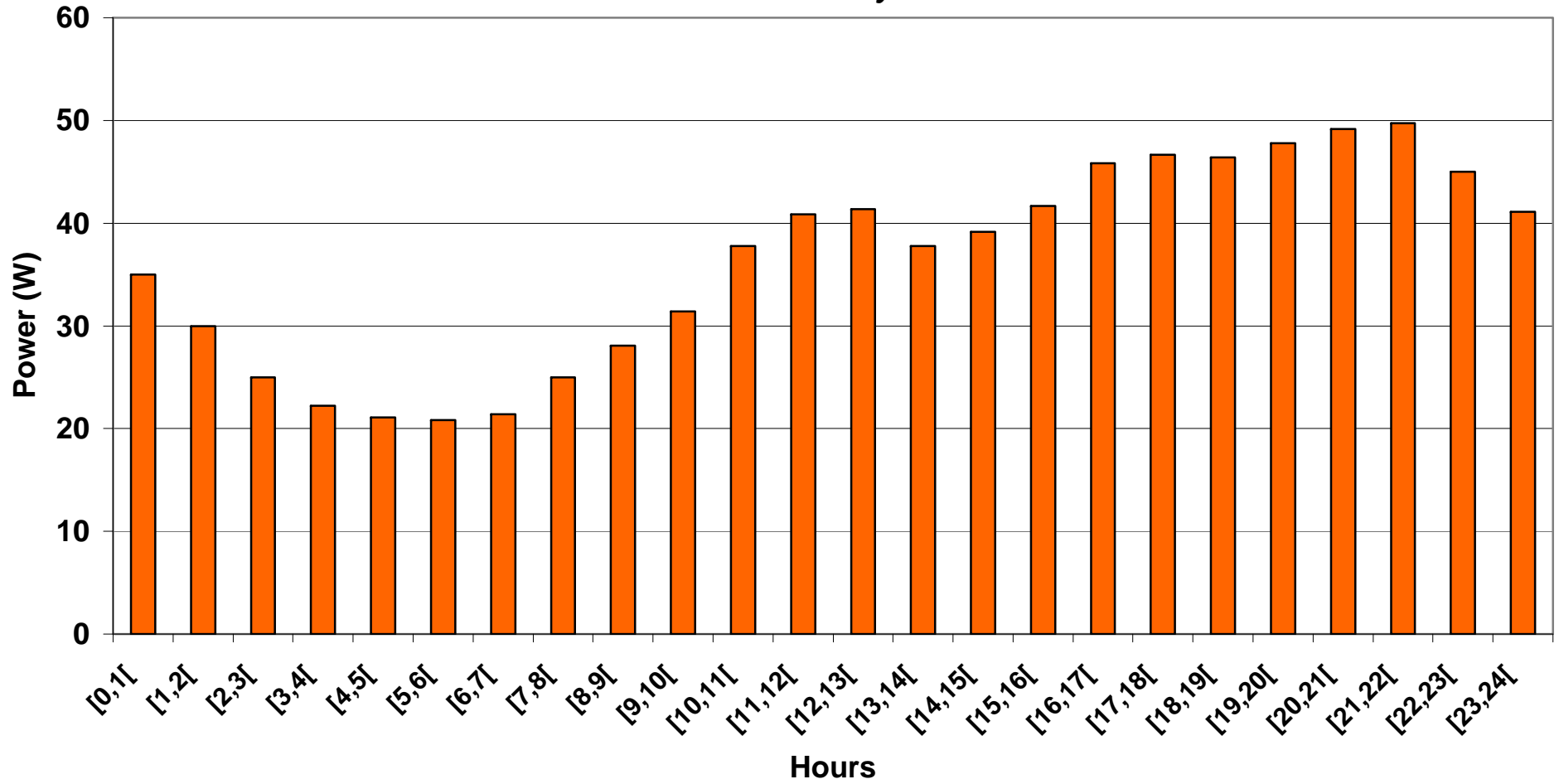


## House, family, 26-64 years old, with direct electric heating

### Structure of the average hourly load curve for the specific consumptions



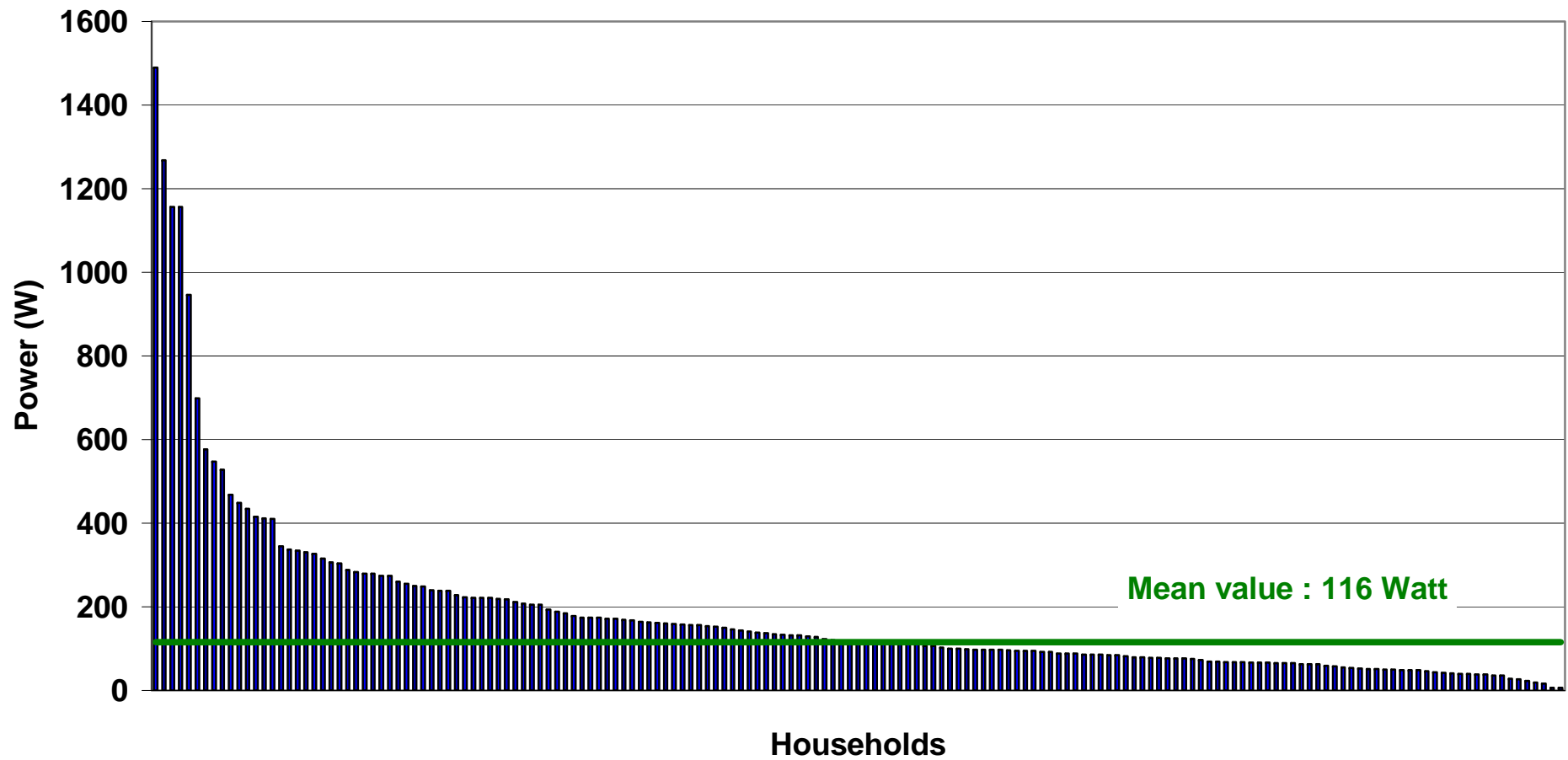
**Computer site**  
**Daily average load curve**  
**Apartment, couple without children, 26-64 years old**  
*Holidays*

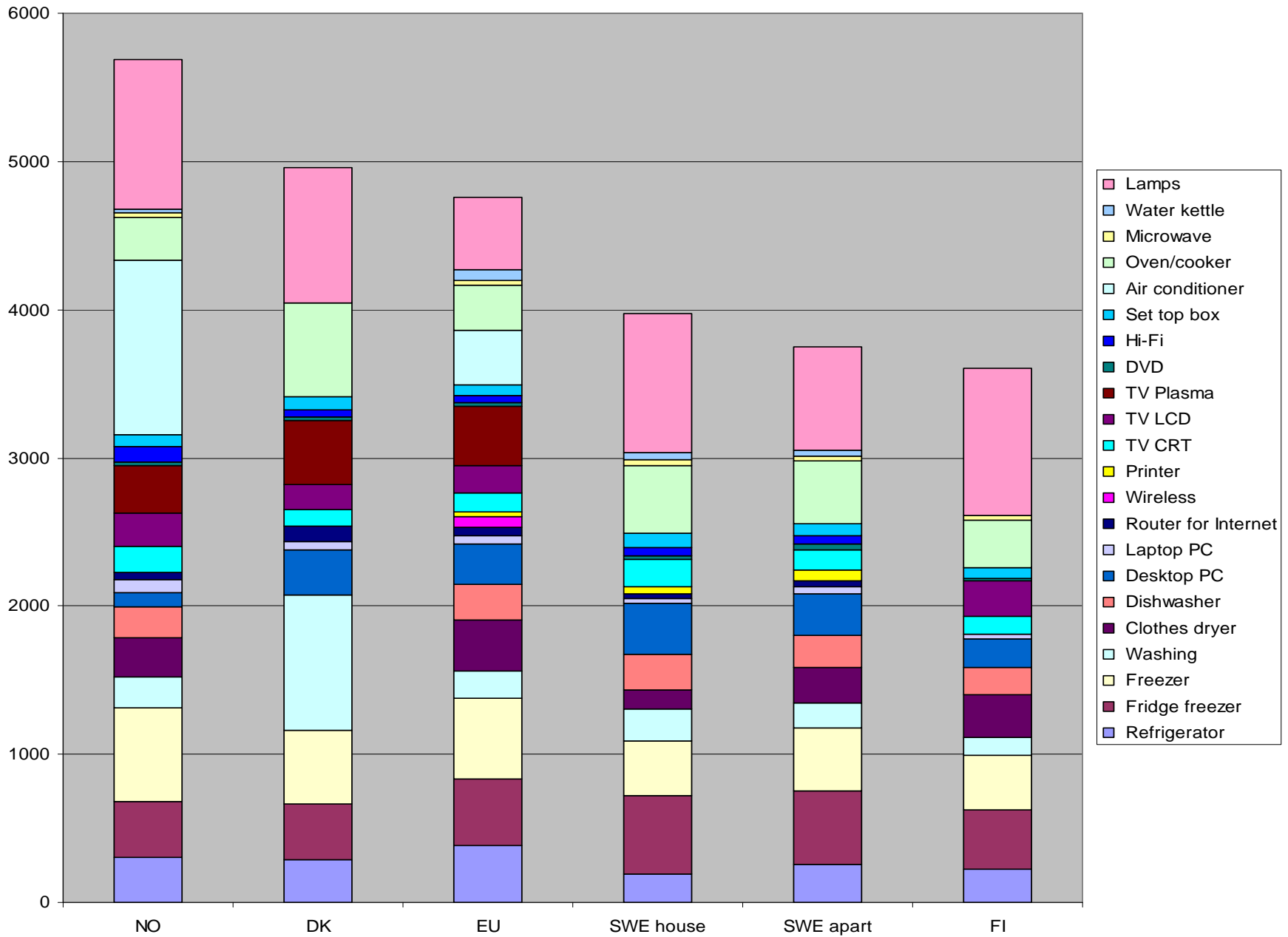




# Standby

Standby power measured between 03:00 and 04:00  
All Houses





# Gå till hemsidan

<http://www.energimyndigheten.se/sv/Energifakta/Statistik/Forbattrad-energistatistik-i-bebyggelsen/Matning-av-hushallsel-pa-apparatniva-/>

Eller använd kortlänken:

[www.energimyndigheten.se/festis](http://www.energimyndigheten.se/festis)